

FUTURE READY

DYMENTHOLM, AVANT GARDE & GUESTS

DEC | 10 | 2021

SOFT CLOSE BEGINS @ 12:00 NOON



Winter
Edition

walker dairysales.com

FUTURE READY

Online Sale ~ Winter Edition

FRIDAY, DECEMBER 10, 2021 • EAST GARAFRAXA, ON

Bidding opens Tuesday, December 7, 2021 at 8:00am

Soft Close begins at 12:00 Noon on Friday, December 10, 2021

SALE HOST: PARALLEL GENETICS (LOTS)

GPS Address: 032207 County Road 5, East Garafraxa, Ontario L9W 6Z2

Schedule of Events:

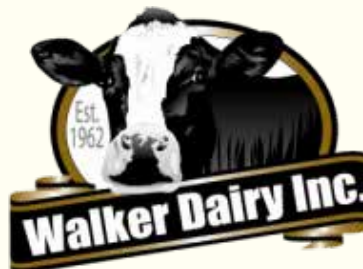
- Cattle will be available for viewing Wednesday-Friday, December 8-10, 2021 ••
Contact Joe Russwurm (Parallel) at 519.278.5773

Tuesday, December 7th • 8:00am EDT • Future Ready Via Dymentholm Sale bidding opens
Friday, December 10th • 12:00 Noon EDT • Future Ready Via Dymentholm Sale closing begins

Sale Contacts:

Collin Allardyce.....	519.865.1280
Andrew DenHann.....	705.440.6010
Jim Doan.....	519.777.9389
Sebastien Dion.....	519.320.0656
David Dymont.....	905.308.1008
Dave Eastman.....	905.866.7800
Sam Grandy.....	905.441.6058
Tyler Gunby.....	905.518.6738
Colleen Halpenny.....	613.485.0422
Lynn Harbaugh.....	920.420-1524
Michael Heath.....	443.375.8048
Brent Howe.....	519.282.5245
Jack Melia.....	905.870.1944
Joe Price.....	765.618.5479
Joanna Russwurm.....	705.879.9492
Joe Russwurm.....	519.278.5773
Jeff Stephens.....	905.317.8252

Sale Managed By:



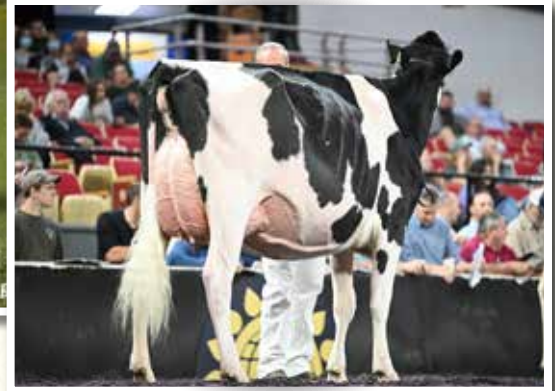
walkerdairysales.com

FUTURE READY *Winter Edition*



LADYROSE CAUGHT YOUR EYE-ET VG-89
DAM OF LOTS 1 & 2

1st Junior 2-Year-Old, International Show 2021



Lot 1

DYMENTHOLM GENETICS & EVOLUTION HOLSTEINS
DUNDAS, ON
905-308-1008 DAVID
519-320-0656 SEBASTIEN

Avant-Garde-I KD Summerfest-ET

CAN 13114881 *TY *TV A2A2
 PTA +610M +21F +23P 82R 12/21
 PTA +1.4PL 3.02SCS -2.0DPR 2.7%DCE
 PTA +3.02T +2.30UDC +1.96FLC 80R 12/21
 GTPI +2383G GLPI +2949 Conf +10

Ladyrose Caught Your Eye-ET

840 3130101491 Very Good-89 VEEVE @ 2-03
 GTPI +2147 +3.71T +2.63UDC +1.36FLC 12/21
 GLPI +2769 Conf +14 MS +10

- 1st Junior 2-Year-Old, International Show 2021
- Sold for \$156,000 at 2021 Summer Selection Sale!

Full sister to Achieverslegacy

Rosedale Catch A Glimpse-ET VG-89 EVVVE 2yr

- All-American Winter Yearling 2017
- All-Canadian Intermediate Yearling 2017

D2 SUMMERFEST SEQUEL

CAN 14131681

Born: April 23, 2021 HMID: 5240

GTPI +2211 +431M +7F +15P 79R 12/21

PTA +2.94T +1.79UDC +1.40FLC 79R 12/21

GLPI +2740 Conf +12

Woodcrest King Doc

840 3132417775 Excellent-90 *TY *TV *TL *TD

PTA +1574M +69F +54P 99R 12/21

PTA +3.54T +2.36UDC +2.10FLC GTPI +2783G

Walnutlawn McCutchen Summer-ET

CAN 11120480 Excellent-95-2E 9*

7-02 2x 365d 37010 4.7 1735 3.5 1285

- Nom Canadian Champion Mature Cow 2020

Croteau Lesperron Unix-ET

CAN 107567492 EX-96-CAN ST'17 *TY *TV

PTA +536M +24F +11P 99R 12/21

PTA +2.39T +2.40UDC +.15FLC GTPI +2351G

Rosedale Achieverslegacy-ET

840 3130798690 Very Good-89 VEEVE @ 2-01

1-09 2x 365d 26380 5.1 1358 3.6 954

- All-American Milking Yearling 2017
- 1st Milking Yearling, International Show 2017

3rd Dam

Rosedale Lexington-ET EX-95 EEEEE 2E

4-11 2x 365d 42780 4.6 1973 3.0 1289

- All-American 5-Year-Old 2013
- Reserve All-American Junior 3-Year-Old 2011
- Reserve All-American Junior 2-Year-Old 2010

4th Dam

Rosedale Lexi-ET VG-89 EEEVE

2-02 2x 365d 26800 5.1 1356 2.9 787

- Res Int Champion, Midwest Spring Nat'l 2007
- All-Wisconsin Junior 2-Year-Old 2006
- HM All-American Spring Yearling 2005

5th Dam

Rosedale Lea-Ann-ET EX-93 2E GMD *RC

4-08 2x 365d 39370 3.4 1325 3.1 1201

- 1st Junior 3-Year-Old, Midwest Spring Nat'l 1998

6th Dam

Stookey Elm Park Blackrose-ET EX-96 3E GMD

5-03 2x 365d 42230 4.6 1939 3.4 1432

Life: 1609d 149880 4.4 6621 3.3 4940

- All-American Junior 3 Year Old 1993
- All-American Junior 2-Year-Old 1992

7th Dam

Nandette TT Speckle-Red-ET EX-93 DOM

4-08 2x 365d 25290 4.7 1195

- All-American R&W 1981 & 1984

FUTURE READY *Winter Edition*



LADYROSE CAUGHT YOUR EYE-ET VG-89
DAM OF LOTS 1 & 2
1st Junior 2-Year-Old, International Show 2021



ROSEDALE LEXINGTON-ET EX-95 2E
3RD DAM OF LOTS 1 & 2
All-American 5-Year-Old 2013

Lot 2

DYMENTHOLM GENETICS & EVOLUTION HOLSTEINS
DUNDAS, ON
905-308-1008 DAVID
519-320-0656 SEBASTIEN

Blondin Destiny-ET

CAN 111633697 *TY*TV A2A2
 PTA +905M +48F +38P 81R 12/21
 PTA +.5PL 2.88SCS -1.6DPR 2.2%DCE
 PTA +2.68T +2.17UDC +1.31FLC 79R 12/21
 GTPI +2609G GLPI +3135 Conf +9

Ladyrose Caught Your Eye-ET

840 3130101491 Very Good-89 VEEVE @ 2-03
 GTPI +2147 +3.71T +2.63UDC +1.36FLC 12/21
 GLPI +2769 Conf +14 MS +10
 • *1st Junior 2-Year-Old, International Show 2021*
 • *Sold for \$156,000 at 2021 Summer Selection Sale!*

Full sister to Achieverslegacy

Rosedale Catch A Glimpse-ET VG-89 EVVVE 2yr
 • *All-American Winter Yearling 2017*
 • *All-Canadian Intermediate Yearling 2017*

D2 EYE OF DESTINY

CAN 14061298
 Born: July 31, 2021 HMID: 777
 GTPI +2366 +630M +27F +23P 79R 12/21
 PTA +2.86T +1.77UDC +1.66FLC
 GLPI +3012 Conf +12

Progenesis Dropkick

CAN 12452135 *TY*TV A2A2
 PTA +512M +37F +29P 93R 12/21
 PTA +2.35T +1.75UDC +.27FLC GTPI +2528G

Kings-Ransom Hot Debbie-ET

840 3142039845 VG-85-CAN
 2-03 2x 365d 36224 5.0 1806 3.5 1279

Croteau Lesperron Unix-ET

CAN 107567492 EX-96-CAN ST'17 *TY*TV
 PTA +536M +24F +11P 99R 12/21
 PTA +2.39T +2.40UDC +.15FLC GTPI +2351G

Rosedale Achieverslegacy-ET

840 3130798690 Very Good-89 VEVVE @ 2-01
 1-09 2x 365d 26380 5.1 1358 3.6 954
 • *All-American Milking Yearling 2017*
 • *1st Milking Yearling, International Show 2017*

3rd Dam

Rosedale Lexington-ET EX-95 EEEEE 2E

4-11 2x 365d 42780 4.6 1973 3.0 1289
 • *All-American 5-Year-Old 2013*
 • *Reserve All-American Junior 3-Year-Old 2011*
 • *Reserve All-American Junior 2-Year-Old 2010*
4th Dam

Rosedale Lexi-ET VG-89 EEEVE

2-02 2x 365d 26800 5.1 1356 2.9 787
 • *Res Int Champion, Midwest Spring Nat'l 2007*
 • *All-Wisconsin Junior 2-Year-Old 2006*
 • *HM All-American Spring Yearling 2005*
5th Dam

Rosedale Lea-Ann-ET EX-93 2E GMD *RC

4-08 2x 365d 39370 3.4 1325 3.1 1201
 • *1st Junior 3-Year-Old, Midwest Spring Nat'l 1998*
6th Dam

Stookey Elm Park Blackrose-ET EX-96 3E GMD

5-03 2x 365d 42230 4.6 1939 3.4 1432
 Life: 1609d 149880 4.4 6621 3.3 4940
 • *All-American Junior 3 Year Old 1993*
 • *All-American Junior 2-Year-Old 1992*
7th Dam

Nandette TT Speckle-Red-ET EX-93 DOM

4-08 2x 365d 25290 4.7 1195
 • *All-American R&W 1981 & 1984*

FUTURE READY *Winter Edition*



OCD DOC MISCHIEVOUS-ET VG-87-CAN
DAM OF LOTS 3, 4 & 5



Lot 3

DYMENTHOLM GENETICS & EVOLUTION HOLSTEINS
DUNDAS, ON
905-308-1008 DAVID DYMENT
519-320-0656 SEBASTIEN DION

Mirabell Sound System

ITA 17991512628 EX-94-ITA
PTA +1250M +83F +46P 92R 12/21
PTA +1.4PL 2.97SCS -1.5DPR 2.1%DCE
PTA +1.92T +1.28UDC +.12FLC 90R 12/21
GTPI +2666G GMLPI +3320 Conf+4 MS +1

OCD Doc Mischievous-ET

840 3134445449 VG-87-2YR-CAN
GTPI +2695 +722M +58F +34P 81R 12/21
PTA +3.13T +2.55UDC +1.85FLC 80R 12/21
• 2nd Jr 2-Year-Old, Western ON Fall Showcase 2021

D2 SOUND SYSTEM MIXER

CAN 13909576
Born: March 24, 2021 HMID: 99
GLPI +3411 Conf +6 MS +7
GTPI +2746 +569M +83F +30P +2.19T 12/21

Seagull-Bay Silver-ET

72156794 GM 4/15 *TY *TV
PTA +662M +73F +32P 99R 12/21
PTA +1.57T +1.75UDC +1.22FLC GTPI +2522G

Mirabell Ssire Shana-ET

ITA 17991272658 VG-86-ITA

Woodcrest King Doc

840 3132417775 Excellent-90 *TY *TV *TL *TD
PTA +1574M +69F +54P 99R 12/21
PTA +3.54T +2.36UDC +2.10FLC GTPI +2783G

OCD Delta Missy 4212-ET

840 3127421836 Excellent-94 EEEVE 2E EX-97-MS
GTPI +2478 +394M +42F +19P 86R 12/21
PTA +2.71T +2.60UDC +.80FLC +1.5PL
4-04 3x 365d 36340 3.8 1378 3.5 1282
3-01 3x 365d 34300 3.8 1313 3.3 1145
2-01 3x 294d 26040 3.7 971 3.2 845

3rd Dam

Butz-Hill Magical Missy EX-94 EEEEE 2E 4*
4-09 3x 365d 31940 3.7 1182 3.5 1108

4th Dam

Morsan Man D Missy-ET VG-85 2*
2-04 2x 305d 20450 5.5 1124 4.7 760

5th Dam

Valleyville Dolman Missy VG-89-CAN 7*
3-11 2x 365d 44648 4.6 2075 3.5 1545

6th Dam

Eastside Lewisdale Gold Missy EX-95-CAN 32*
5-00 2x 365d 40483 4.2 1711 3.2 1314

Life: 4 Lacs 148065 4.6 6784 3.3 4956

- All-American 5-Year-Old 2011
- All-Canadian 5-Year-Old 2011
- Supreme Champion, World Dairy Expo 2011
- Supreme Champion, Royal Winter Fair 2011
- All-American Junior 3-Year-Old 2009
- All-American Junior 2-Year-Old 2008
- All-Canadian Junior 2-Year-Old Cow 2008

7th Dam

Stadacona Outside Abel VG-88-CAN 38*
3-03 2x 365d 36599 4.6 1695 3.0 1093

Life: 3 Lact 107117 4.2 4447 3.0 3263

- HM All-Atlantic Winter Yrlg Heifer 2001

8th Dam

Stadacona Progress Anibel VG-85-CAN 2*
4-03 2x 365d 38186 3.4 1312 3.2 1208

Life: 8 Lact 266137 3.4 9034 3.1 8311



OCD DELTA MISSY 4212-ET EX-94 2E
2ND DAM OF LOTS 3, 4 & 5



Lot 4

D2 CHIEF MISCHIEF-ET

CAN 14061297
Born: July 28, 2021 HMID: 776
GLPI +3173 Conf +10 MS +10
GTPI +2523 +699M +38F +23P +2.67T 12/21

Stantons Chief-ET

840 3129015989 *TY *TV A2A2
PTA +659M +8F +17P 96R 12/21
PTA +.8PL 2.73SCS -.4DPR 3.1%DCE
PTA +2.04T +2.29UDC +.44FLC 95R 12/21
GTPI +2282G GLPI +3123 Conf +12

OCD Doc Mischievous-ET

840 3134445449 VG-87-2YR-CAN
GTPI +2695 +722M +58F +34P 81R 12/21
PTA +3.13T +2.55UDC +1.85FLC 80R 12/21
• 2nd Jr 2-Year-Old, Western ON Fall Showcase 2021

Lot 5

D2 DIAMONDBACK MISTIQUE

CAN 14131689
Born: June 17, 2021 HMID: 5248

Mr D Apple Diamondback

840 3013721049 Excellent-93 *RC *TV *TL *TY
PTA -400M -25F -1P 99R 12/21
PTA +.0PL 3.12SCS -3.0DPR 2.9%DCE
PTA +2.44T +1.95UDC +1.43FLC 99R 12/21
GTPI +1873G GLPI +2501 Conf +12

Woodcrest King Doc

840 3132417775 Excellent-90 *TY *TV *TL *TD
PTA +1574M +69F +54P 99R 12/21
PTA +3.54T +2.36UDC +2.10FLC GTPI +2783G

OCD Delta Missy 4212-ET

840 3127421836 Excellent-94 EEEVE 2E EX-97-MS
GTPI +2478 +394M +42F +19P 86R 12/21
PTA +2.71T +2.60UDC +.80FLC +1.5PL
4-04 3x 365d 36340 3.8 1378 3.5 1282
3-01 3x 365d 34300 3.8 1313 3.3 1145

DYMENTHOLM GENETICS & EVOLUTION HOLSTEINS
DUNDAS, ON
905-308-1008 DAVID DYMENT
519-320-0656 SEBASTIEN DION

3rd Dam

Butz-Hill Magical Missy EX-94 EEEEE 2E 4*
4-09 3x 365d 31940 3.7 1182 3.5 1108

4th Dam

Morsan Man D Missy-ET VG-85 2*
2-04 2x 305d 20450 5.5 1124 4.7 760

5th Dam

Valleyville Dolman Missy VG-89-CAN 7*
3-11 2x 365d 44648 4.6 2075 3.5 1545

6th Dam

Eastside Lewisdale Gold Missy EX-95-CAN 32*
5-00 2x 365d 40483 4.2 1711 3.2 1314
Life: 4 Lacs 148065 4.6 6784 3.3 4956

- Supreme Champion, World Dairy Expo 2011
- Supreme Champion, Royal Winter Fair 2011

7th Dam

Stadacona Outside Abel VG-88-CAN 38*
3-03 2x 365d 36599 4.6 1695 3.0 1093
Life: 3 Lact 107117 4.2 4447 3.0 3263

- HM All-Atlantic Winter Yrlg Heifer 2001

8th Dam

Stadacona Progress Anibel VG-85-CAN 2*
4-03 2x 365d 38186 3.4 1312 3.2 1208
Life: 8 Lact 266137 3.4 9034 3.1 8311



AVANT-GARDE-I SWINGMAN LOTTO-RED VG-86-CAN
DAM OF LOT 6; MATERNAL SISTER TO LOT 7

Lot 6

AVANT GARDE GROUP
DUNDAS, ON
905-308-1008 DAVID DYMENT
519-320-0656 SEBASTIEN DION
443-375-8048 MICHAEL HEATH

Peak Jagger-ET

840 3205436591
PTA +185M +52F +28P 81R 12/21
PTA +2.0PL 2.88SCS -.4DPR 1.9%DCE
PTA +3.72T +3.00UDC +2.03FLC 78R 12/21
GTPI +2707G GLPI +3263 Conf +10

Avant-Garde-I Swingman Lotto-Red

CAN 13446600 VG-86-2YR-CAN VG-87-MS
2-01 2x 90d 9010 4.0 362 2.9 265 RIP
• 1st REW Jr 2-Year-Old, ON Summer Show 2021
• \$29,500 Sale Topper at 2021 Red Revival Sale!

Maternal brother to Swingman Lotto-Red

Avant-Garde Latenite-Red *PO A2A2
PTA +1033M +26F +25P +3.16T 12/21

AVANT-GARDE JAGGER LOOPHOLE-ET

CAN 14061302 *RC
Born: August 15, 2021 HMID: 781
GLPI +3217 Conf +9 MS +9

Siemers Hunk-ET

840 3141495349 A2/A2
PTA +328M +79F +36P 93R 12/21
PTA +2.85T +2.62UDC +1.71FLC GTPI +2752G

Cedarwal Jitters-ET

CAN 12852717 Very Good-88

Westcoast Swingman-Red

CAN 12638346 VG-86-CAN
PTA +717M +43F +21P 85R 12/21
PTA +1.42T +1.42UDC +.81FLC GTPI +2600G

Littleholme Lotto-ET

840 3138274632 VG-85-3YR-CAN VG-86-MS *RC
3-01 2x 365d 31987 4.1 1303 3.4 1085

3rd Dam

Ms Doorman Lysette-ET EX-94 EEEEE 2E *RC
3-04 2x 305d 19410 4.1 805 3.5 687

4th Dam

Blondin Lauthority Libye EX-92 EEEEE *RC 2*
3-04 2x 365d 35780 3.4 1210 3.3 1178

• *Intermediate Champion, QC Spring Show 2014*

5th thru 12th Dams

Rockymountain Talent Licorice-ET EX-95 8* *RC
3-10 2x 323d 34771 4.0 1384 3.4 1173

• *All-American & All-Canadian 4-Year-Old 2011*

Idee Rudolph Liberty VG-89 EX-MS-CAN 9*

5-11 2x 365d 33838 3.4 1164 3.3 1102

Life: 5 Lact 151496 3.7 5553 3.2 4903

Idee Skychief LaToya VG-88-CAN 10*

5-07 2x 365d 32527 4.2 1362 3.2 1049

Life: 4 Lact 141480 4.6 6471 3.5 4983

C Ravenswell Lydia EX-92 EEEE DOM 19*

5-01 2x 365d 24578 4.6 1125 3.2 779

Spring Farm Miss Lynn-ET VG-CAN

2-11 2x 329d 22335 4.0 888 3.6 811

Spring Farm Miss Connie VG-88 2*

Life: 5 Lact 108757 3.9 4273

Spring Farm Miss Citation VG-87 3*

6-04 2x 365d 27725 3.8 1054

Life: 11 Lacs 215519 3.7 7952

Spring Farm Miss Pathfinder EX-CAN 8*

Life: 12 Lact 242021 3.6 8814

Next three dams VG-CAN



LIDDLEHOLME LOTTO-ET VG-85-CAN
DAM OF LOT 7; 2ND DAM OF LOT 6

Lot 7

AVANT GARDE GROUP
DUNDAS, ON
905-308-1008 DAVID DYMENT
519-320-0656 SEBASTIEN DION
443-375-8048 MICHAEL HEATH

Vogue Redeye P-Red

CAN 40001147 *PC*TY*TV A2A2
PTA +747M +49F +29P 82R 12/21
PTA +3.4PL 2.82SCS +0.3DPR 2.2%DCE
PTA +2.47T +2.14UDC +1.42FLC 80R 12/21
GTPI +2672G GLPI +3125 Conf +8

Liddleholme Lotto-ET

840 3138274632 VG-85-3YR-CAN VG-86-MS *RC
3-01 2x 365d 31987 4.1 1303 3.4 1085

Dam of

Avant-Garde Latenite-Red *PO A2A2

PTA +1033M +26F +25P +3.16T 12/21

Avant-Garde-I Swingman Lotto-Red VG-86-CAN

2-01 2x 90d 9010 4.0 362 2.9 265 RIP

- 1st R&W Jr 2-Year-Old, ON Summer Show 2021
- \$29,500 Sale Topper at 2021 Red Revival Sale!

AVANT-GARDE REDEYE LUCKED OUT-RED

CAN 14221801
Born: November 1, 2021 HMID: 5286

Progenesis Webster-ET

CAN 12648638 *PO*RC A2A2
PTA +1153M +51F +52P 95R 12/21
PTA +1.76T +1.83UDC +.88FLC GTPI +2709G

Calbrett Kingboy Miranda-P

CAN 11715031 EX-93-CAN 3*
5-05 2x 365d 32674 4.5 1477 3.0 979
2-06 2x 365d 30018 3.9 1164 3.4 1014

Mr DG-TM King Bailey-ET

73508043 *RC*TY*TV
PTA +1139M +50F +24P 99R 12/21
PTA +1.91T +.89UDC +.64FLC GTPI +2360G

Ms Doorman Lysette-ET

840 3128881303 Excellent-94 EEEEE 2E *RC
3-04 2x 305d 19410 4.1 805 3.5 687
2-02 2x 305d 17150 4.5 774 3.7 638

3rd Dam

Blondin Lauthority Libye EX-92 EEEEE *RC 2*
3-04 2x 365d 35780 3.4 1210 3.3 1178

- *Intermediate Champion, QC Spring Show 2014*

4th Dam

Rockymountain Talent Licorice-ET EX-95 8* *RC
3-10 2x 323d 34771 4.0 1384 3.4 1173

- *All-American 4-Year-Old 2011*
- *All-Canadian 4-Year-Old 2011*

5th Dam

Idee Rudolph Liberty VG-89 EX-MS-CAN 9*

5-11 2x 365d 33838 3.4 1164 3.3 1102
Life: 5 Lact 151496 3.7 5553 3.2 4903

6th thru 11th Dams

Idee Skychief LaToya VG-88-CAN 10*

5-07 2x 365d 32527 4.2 1362 3.2 1049
Life: 4 Lact 141480 4.6 6471 3.5 4983

C Ravenswell Lydia EX-92 EEEEE DOM 19*

5-01 2x 365d 24578 4.6 1125 3.2 779

Spring Farm Miss Lynn-ET VG-CAN

2-11 2x 329d 22335 4.0 888 3.6 811

Next six dams VG & EX-CAN

FUTURE READY *Winter Edition*



S-S-I DOC HAVE NOT 8783-ET EX-91
DAM OF LOTS 8 & 9

Nominated All-American Milking Yearling 2019

Lot 8

ERNESTANTHONY-I SELECT HAVE IT

CAN 13909574

Born: March 22, 2021 HMID: 97

GTPI +2608 +1105M +56F +43P +3.05T 12/21

GLPI +3132 Conf +10 MS +11

Avant-Garde Unix Select-ET

840 3149135073 99%RHA *TY *TV

PTA -426M +32F -3P 82R 12/21

PTA -.4PL 2.84SCS -.5DPR 2.1%DCE

PTA +3.09T +2.52UDC +.78FLC 81R 12/21

GTPI +2326G GLPI +28 Conf +11 MS +11

S-S-I Doc Have Not 8783-ET

840 3143722146 Excellent-91 EVEEE @ 3-06

GTPI +2777 +1363M +54F +59P 83R 12/21

PTA +3.28T +2.59UDC +.99FLC

1-10 2x 365d 25480 4.8 1223 3.6 923

• *Nom All-American Milking Yearling 2019*

• *1st Milking Yearling, Mid-East Fall National 2019*

Lot 9

ERNEST-ANTHONY-I LATENITE HOLY

CAN 14061317 *PO *RC

Born: October 7, 2021 HMID: 796

GTPI +2533 +987M +41F +36P +2.75T 12/21

GLPI +3125 Conf +11 MS +9

Avant-Garde-I Latenite-P-Red

CAN 13507027 *PC *TY *TV A2A2

PTA +1033M +26F +25P 80R 12/21

PTA +.1PL 3.02SCS -.9DPR 2.6%DCE

PTA +3.16T +1.94UDC +1.06FLC 78R 12/21

GTPI +2382G GLPI +

Woodcrest King Doc

840 3132417775 Excellent-90 *TY *TV *TL *TD

PTA +1574M +69F +54P 99R 12/21

PTA +3.54T +2.36UDC +2.10FLC GTPI +2783G

Fly-Higher Jedi Havenot-ET

840 3132362543 Very Good-86 VG-MS @ 2-06

3-05 2x 319d 27979 3.1 858 3.4 902

DYMENTHOLM GENETICS & EVOLUTION HOLSTEINS
DUNDAS, ON
905-308-1008 DAVID DYMENT
519-320-0656 SEBASTIEN DION

3rd Dam

Cookiecutter Masy Hashes-ET VG-85 VG-MS

3-11 3x 365 39630 3.6 1436 3.1 1209

Life: 1393d 121290 3.9 4762 3.2 3920

4th Dam

Cookiecutter MOM Halo-ET VG-88 VVEEE DOM

2-00 3x 365d 35280 5.2 1819 3.5 1237

5th Dam

Cookiecutter Gold Holler-ET VG-88 DOM

2-03 2x 365d 40730 3.5 1410 3.1 1249

6th Dam

Ms Kings-Ransom Champ Haley-ET EX-90 GMD

3-11 3x 365d 43690 3.7 1625 3.1 1357

7th Dam

Regancrest-JDV Hanna-ET EX-90 EVVVE

4-07 2x 365d 45110 4.3 1922 3.2 1449

8th Dam

Long-Haven Rudolph Dee-ET EX-90 2E GMD

DOM

2-11 2x 365d 32720 4.8 1565 3.8 1252

Life: 2193d 166900 4.3 7099 3.5 5884

Next three dams VG & EX back to EX-95 Dellia!

FUTURE READY *Winter Edition*



COOKIECUTTER DTA HABITAN-ET EX-90
DAM OF LOT 10



AOT AVALANCHE HANGOVER-ET
MATERNAL SISTER TO LOT 10

Unanimous All-American Spring Calf 2020

Lot 10

DYMENTHOLM GENETICS & EVOLUTION HOLSTEINS
DUNDAS, ON
905-308-1008 DAVID DYMENT
519-320-0656 SEBASTIEN DION

Avant-Garde Unix Select-ET

840 3149135073 99%RHA *TY *TV
PTA -426M +32F -3P 82R 12/21
PTA -.4PL 2.84SCS -.5DPR 2.1%DCE
PTA +3.09T +2.52UDC +.78FLC 81R 12/21
GTPI +2326G GLPI +28 Conf +11 MS +11

Cookiecutter Dta Habitan-ET

840 3134739087 Excellent-90 EVVVE @ 5-06 DOM
GTPI +2792 +858M +75F +32P 89R 12/21
PTA +2.56T +2.55UDC +.55FLC +4.0PL
2-04 3x 365d 36280 4.7 1706 3.3 1214

AOT SELECT HAIL MARY-ET

840 3217199490 HMID: 404
Born: December 1, 2020 A2/A2
GTPI +2568 +539M +56F +24P +2.82T 12/21
GLPI +3046 Conf +10 MS +9

Bred: November 24, 2021 to
Farnear Delta-Lambda-ET 551H03379

Maternal sister to Hail Mary

AOT Avalanche Hangover-ET

- *Unanimous All-American Spring Calf 2020*
- *1st Spring Calf, NA Open Holstein Show 2020*

Croteau Lesperron Unix-ET

CAN 107567492 EX-96-CAN ST'17 *TY *TV
PTA +536M +24F +11P 99R 12/21
PTA +2.39T +2.40UDC +.15FLC GTPI +2351G

Walnutlawn McCutchen Summer-ET

CAN 11120480 Excellent-95-2E 9*
7-02 2x 365d 37010 4.7 1735 3.5 1285
• *Nom Canadian Champion Mature Cow 2020*

Mr Mogul Delta 1427-ET

72128216 GM 8/20 *TY *TV
PTA +939M +58F +33P 99R 12/21
PTA +1.18T +1.80UDC +.53FLC GTPI +2655G

Cookiecutter Day Hayley-ET

840 3011584606 Very Good-88 VEVVE DOM
2-00 3x 365d 35140 3.9 1379 3.4 1192
3-03 3x 365d 31900 4.4 1401 3.4 1091

3rd Dam

Cookiecutter Day Haley-ET VG-88 VEVVE
2-00 3x 365d 35140 3.9 1379 3.4 1192

4th Dam

Cookiecutter MOM Halo-ET VG-88 VVEEE DOM
2-00 3x 365d 35280 5.2 1819 3.5 1237

5th Dam

Cookiecutter Gold Holler-ET VG-88 DOM
2-03 2x 365d 40730 3.5 1410 3.1 1249

6th Dam

Ms Kings-Ransom Champ Haley-ET EX-90 GMD
3-11 3x 365d 43690 3.7 1625 3.1 1357

7th Dam

Regancrest-JDV Hanna-ET EX-90 EVVVE
4-07 2x 365d 45110 4.3 1922 3.2 1449

8th Dam

Long-Haven Rudolph Dee-ET EX-90 2E GMD DOM
2-11 2x 365d 32720 4.8 1565 3.8 1252

Life: 2193d 166900 4.3 7099 3.5 5884

Next three dams VG & EX back to EX-95 Dellia!

FUTURE READY *Winter Edition*



DYMENTHOLM LEXIS LIVELY-ET EX-93
2ND DAM OF LOT 11
Reserve All-Canadian Mature Cow 2014



IDEE GOLDWYN LULU-ET EX-95-CAN
3RD DAM OF LOT 11
HM All-Canadian Junior 2-Year-Old 2009

Lot 11

DYMENTHOLM
 468 FALLSVIEW RD
 DUNDAS, ON L9H 5E2
 905-308-1008 DAVID

Mr D Apple Diamondback

840 3013721049 Excellent-93 *RC *TV *TL *TY
 PTA -400M -25F -1P 99R 12/21
 PTA -.1PL 3.12SCS -3.0DPR 2.9%DCE
 PTA +2.44T +1.95UDC +1.43FLC 99R 12/21
 GTPI +1873G GLPI +2501 Conf +12

R-E-W Lenore-ET

144769762 Very Good-85 VG-MS @ 2-02
 2-00 2x 112d 10480 3.0 316 3.1 323 RIP

R-E-W DIAMOND LILIBET

840 3234627229
 Born: March 9, 2021 Tag: 2140

Val-Bisson Doorman-ET

CAN 107281711 EX-90-CAN ST'16 *TV *TY
 PTA -446M +14F +9P 99R 12/21
 PTA +2.44T +1.58UDC +.67FLC GTPI +2164G

Ms Delicious Apple-Red-ET

139236776 Excellent-94 2E
 7-02 2x 365d 46510 4.0 1844 3.3 1512
 • Reserve All-American REW 125,000 Lb Cow 2015

Dymentholm Mr App Avalanche-TW

CAN 11957107 *RC *CV *TY *TL *TD
 PTA -94M -1F -4P 99R 12/21
 PTA +3.76T +2.85UDC +2.26FLC GTPI +2036G

Dymentholm Lexis Lively-ET

CAN 11425864 Excellent-93 EEVEE @ 5-08
 3-06 2x 360d 35500 3.5 1249 3.1 1103
 1-11 2x 365d 31760 3.9 1226 3.1 996
 • Grand Champion, CT State Show 2015
 • Junior All-American Senior 2-Year-Old 2014
 • 1st Sr 2-Year-Old & HM Intermediate Champion,
 International Junior Holstein Show 2014
 • Res Int Champ, NY Int'l Spring Junior Show 2014

3rd Dam

Idee Goldwyn Lulu-ET EX-95-CAN 7*

5-10 2x 365d 35977 4.4 1567 3.3 1171
 Life: 3 Lacs 130160 4.5 5816 3.4 4475
 • Nominated All-Canadian Junior 3-Year-Old 2010
 • HM All-Canadian Junior 2-Year-Old 2009
 • HM All-Canadian Junior Yearling 2008

4th Dam

Idee Louis Louise EX-94-2E-CAN 20*

3-04 2x 365d 32564 4.0 1301 3.5 1131
 Life: 5 Lact 162397 4.1 6612 3.5 5697
 • Nominated All-Canadian 4-Year-Old 2006

5th thru 12th Dams

Idee Bellwood Ladonna VG-87-CAN 2*

4-05 2x 319d 26140 4.1 1085 3.3 858

C Ravenswell Lydia EX-92 EEEE DOM 19*

5-01 2x 365d 24578 4.6 1125 3.2 779

Spring Farm Miss Lynn-ET VG-CAN

2-11 2x 329d 22335 4.0 888 3.6 811

Spring Farm Miss Connie VG-88 2*

8-00 2x 305d 21420 3.9 840

Life: 5 Lact 108757 3.9 4273

Spring Farm Miss Citation VG-87 3*

6-04 2x 365d 27725 3.8 1054

Life: 11 Lacs 215519 3.7 7952

Spring Farm Miss Pathfinder EX-CAN 8*

10-6 2x 365d 26338 3.5 924

Life: 12 Lact 242021 3.6 8814

Next three dams VG-CAN



MILKSOURCE GOLDWYN AFRICA-ET EX-95 2E
2ND DAM OF LOT 12
Reserve All-Canadian Mature Cow 2014

Lot 12

DYMENTHOLM
 468 FALLSVIEW RD
 DUNDAS, ON L9H 5E2
 905-308-1008 DAVID

Dymentholm Mr App Avalanche-TW

CAN 11957107 *RC *CV *TY *TL *TD
 PTA -94M -1F -4P 99R 12/21
 PTA -2.6PL 2.89SCS -3.3DPR 3.0%DCE
 PTA +3.76T +2.85UDC +2.26FLC 99R 12/21
 GTPI +2036G GLPI +2582 Conf +14

Budjon-Vail All My Heart-ET

840 3133371204 Very Good-88 VEEVV @ 2-07
 2-02 2x 305d 22170 4.9 1078 3.5 782

R-E-W ALL IN FAVOR-ET

144501894 VG-88-3YR-CAN VG-88-MS
 Born: March 18, 2018
 GTPI +2000 +2.99T +2.15UDC +1.63FLC 12/21
 2-01 2x 356d 23752 4.5 1078 3.5 822
 3-03 2x 133d 12112 3.8 459 3.1 377 RIP

Bred: October 10, 2021 to
 Avant-Garde-1 KD Summerfest-ET 94H019370

De-Su Bkm McCutchen 1174-ET

69990138 Excellent-93 GM 8/15 *TV *TL *TY *TD
 PTA +248M +26F +11P 99R 12/21
 PTA +2.18T +1.39UDC +.98FLC GTPI +2217G

KHW Regiment Apple C-Red-ETN

CAN 70244494 VG-89-CAN
 3-07 2x 365d 36949 4.2 1554 3.6 1332
 • *Res Grand Champ, Supreme Dairy REW 2014*

Val-Bisson Doorman-ET

CAN 107281711 EX-90-CAN ST'16 *TV *TY
 PTA -446M +14F +9P 99R 12/21
 PTA +2.44T +1.58UDC +.67FLC GTPI +2164G

Milksource Goldwyn Africa-ET

65747310 Excellent-95 EEEEE 2E
 7-10 2x 365d 42760 3.5 1480 3.2 1382
 6-02 2x 365d 38750 3.7 1437 3.2 1251
 Life: 1961d 187600 3.8 7069 3.4 6361
 • *Grand Champion, WI Champ Show 2015, 2012*
 • *Grand Champion, Midwest Spring Nat'l 2015, 2012*
 • *Reserve All-Canadian Mature Cow 2014*

3rd Dam

Butz-Butler Durham Angel-ET EX-90 EVVVE
 4-10 2x 333d 37620 3.6 1344 3.1 1161

4th Dam

EO Siemers Ashlyns Angel-ET EX-96 3E GMD

4-03 2x 365d 41370 4.2 1749 3.3 1355
 Life: 1747d 174630 4.5 7842 3.3 5710

- *HHM All-American Aged Cow 2010*
- *HM All-Canadian Mature Cow 2010*

5th Dam

Tri-Day Ashlyn-ET EX-96 EEEEE 2E GMD DOM 6*

4-09 2x 365d 43090 4.8 2079 3.5 1503
 Life: 1374d 144770 4.6 6665 3.5 5135

- *All-American 4-Year-Old 2001*
- *All Canadian 4-Year-Old 2001*
- *Supreme Champion, World Dairy Expo 2001*
- *All-American Senior 3-Year-Old 2000*

6th Dam

Bendy-Brook Odyssey Favorite EX-92 2E DOM

6-01 2x 337d 22670 3.4 770 3.1 706

7th Dam

Bendy-Brook Star Fonda VG-86 VG-MS

3-11 2x 290d 23390 3.5 826 3.1 724

Life: 1677d 108500 3.4 3725 3.2 3430

FUTURE READY *Winter Edition*



AVANT-GARDE KASHMIR SOUL-ET VG-87-CAN
DAM OF LOTS 13 & 14



WALNUTLAWN MCCUTCHEN SUMMER-ET EX-95
2ND DAM OF LOTS 13 & 14

Nominated Canadian Champion Mature Cow 2020

Lot 13

AVANT-GARDE MD SOPHIE-ET

840 3217199496 *RC *PC *TL *TD
Born: January 14, 2021 Tag: 410
GTPI +2203 +552M +20F +13P +2.46T 12/21
GLPI +2810 Conf +10 MS +9

Coomboona Zipit Mirand-PP

AUS 1993596 *RC *PP *TY *TV A2/A2
PTA +746M +26F +11P 90R 12/21
PTA -.5PL -.6DPR 3.03SCS 2.4%DCE
PTA +2.77T +2.30UDC +.56FLC 83R 12/21
GTPI +2322G GLPI +2764 FC +10 MS +8

Avant-Garde Kashmir Soul-ET

840 3147399279 VG-87-2YR-CAN
1-11 2x 365d 34718 4.4 1519 3.4 1179
• 1st Intermediate Yearling & Reserve Junior
Champion, ON Spring Discovery 2019
• 1st Intermediate Yearling, Brant-Wentworth 2019

Lot 14

AVANT-GARDE MRND SHEA-ET

840 3217199497 *PC *TL *TD
Born: January 15, 2021 Tag: 411
GTPI +2234 -301M +26F +0P +3.06T 12 /21

OCD Eraser Zipit-P-ET

840 3125170883 *PC A2/A2
PTA +1112M +25F +34P 98R 12/21
PTA +1.55T +1.43UDC +.25FLC GTPI +2452G

Calbrett Kingboy Miranda-P

CAN 11715031 EX-93-CAN 4*
5-05 2x 365d 32674 4.5 1477 3.0 979
2-06 2x 365d 30018 3.9 1164 3.4 1014

Rayon D'Or Kashmir

CAN 108920733 VG-85-CAN *TY *TV
PTA -366M +13F +5P 94R 12/21
PTA +3.19T +2.60UDC +.99FLC GTPI +2217G

Walnutlawn McCutchen Summer-ET

CAN 11120480 EX-95 EX-96-MS 9*
7-02 2x 365d 37010 4.7 1735 3.5 1285
1-10 2x 365d 27002 4.6 1237 3.3 888
• Nom Canadian Champion Mature Cow 2020
• Nom All-American Senior 3-Year-Old Cow 2016
• Nom All-Canadian Senior 3-Year-Old Cow 2016

AVANT GARDE GROUP

DUNDAS, ON
905-308-1008 DAVID DYMENT
519-320-0656 SEBASTIEN DION
443-375-8048 MICHAEL HEATH

3rd Dam

Misty Springs Lavanguard Sue VG-89-CAN 12*
4-02 2x 365d 30123 4.6 1380 3.2 967

4th Dam

Misty Springs FBI Suzanne-ET VG-87-2YR 4*
2-02 2x 365d 26137 4.6 1199 3.5 921

5th Dam

Willsona Freelance Sizzle-ET VG-86 10*
2-02 2x 335d 25400 3.9 1003 3.3 837

6th thru 13th Dams

Gen-I-Beq Convincer Silver VG-88-CAN 16*
3-11 2x 330d 26338 3.7 974 3.0 778

Glen Drummond Splendor VG-86-2YR-CAN 39*
4-10 2x 314d 26510 4.2 1124 3.2 840

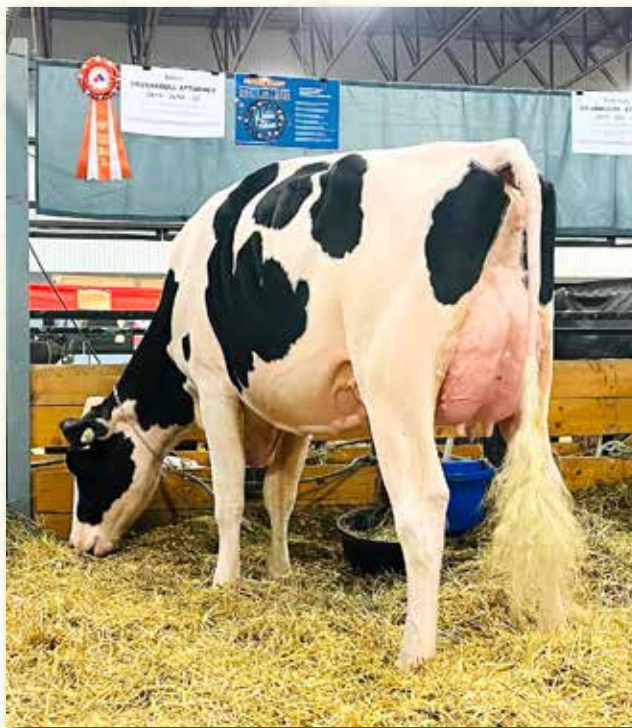
Glen Drummond Aero Flower VG-88-CAN 18*
2-03 2x 326d 25622 4.0 1032 3.4 882

Glen Drummond Shower-ET EX-CAN 14*
4-10 2x 365d 28583 4.8 1380 3.6 1016

Glen Drummond S C Jo Beth EX-2E-CAN 7*
Life: 6 Lacs 141637 4.2 5994 3.2 3593

Glen Drummond Matt Beth VG-85 4*
11-9 2x 365d 25038 3.7 935

Glen Drummond Marquis Beth VG-CAN
Ferglynn Rag Apple Bertha VG-CAN 3*



SAHARA CRUSHABULL ATTORNEY
SELLS AS LOT 15

Lot 15

DYMENTHOLM
468 FALLSVIEW RD
DUNDAS, ON L9H 5E2
905-308-1008 DAVID

OH-River-Syc Crushabull-ET

840 3135145001 EX-92-CAN *TY *TV
PTA +187M -12F +4P 95R 12/21
PTA +.8PL 2.86SCS -1.0DPR 3.0%DCE
PTA +3.45T +2.83UDC +1.47FLC 93R 12/21
GTPI +2206G GLPI +2889 FC +13 MS +12

Butlerview Door Amaretto-ET

CAN 3133063507 EX-90-4YR-CAN
3-04 2x 329d 26411 4.1 1082 3.6 961
4-04 2x 317d 22571 4.6 1041 3.5 798
2-03 2x 301d 19396 5.2 1005 3.5 679
5-05 2x 69d 5505 3.6 196 2.9 161 RIP

SAHARA CRUSHABULL ATTORNEY

CAN 13304974
Born: June 2, 2019 HMID: 946
1-11 2x 142d 8794 3.1 269 3.3 287 RIP

Due: June 1, 2022 to OCD Thunder Struck-ET
250HO15329 (ultrasound female)

Maverick Crush

CAN 12042760 *TY *TV *TL *TD
PTA -893M -51F -15P 99R 12/21
PTA +2.44T +1.53UDC +1.31FLC GTPI +2039G

OH-River-Syc Mogal Brylan

74327163 Very Good-87
2-07 3x 300d 29990 3.4 1029 3.0 897
3-07 3x 280d 27250 3.1 845 3.1 843

Val-Bisson Doorman-ET

CAN 107281711 EX-90-CAN ST'16 *TV *TY
PTA -446M +14F +9P 99R 12/21
PTA +2.44T +1.58UDC +.67FLC GTPI +2164G

BVK Atwood Abrianna-ET

146058941 Excellent-92 EEEVE @ 3-05 *BL *TD
3-02 2x 305d 25170 5.0 1257 3.4 852
2-02 2x 305d 20740 4.0 822 3.3 690
• Reserve All-American Junior 3-Year-Old 2013
• 2nd Jr 3-Year-Old, International Show 2013

ATTORNEY!

- 9th Summer Junior 2-Year-Old, National Holstein Show 2021
- 4th Summer Junior 2-Year-Old, Autumn Opportunity 2021

Maternal sisters to Abrianna

BVK Atwood Arianna-ET EX-94

- All-American Junior 2-Year-Old 2012
- All-Canadian Junior 2-Year-Old 2012

Amlaird Lee Alice-ET EX-94 EEEEE 2E *TL

7-05 2x 365d 36980 5.0 1837 3.4 1256
• All-American Junior 2-Year-Old 2003

3rd Dam

Ms Kingstead Chief Adeen-ET EX-94 2E 11*

3-05 2x 310d 30180 4.0 1209 3.6 1077
Life: 1382d 100760 4.0 4010 3.6 3649

- Nom All-American Junior 3-Year-Old 2000
- Nom All-American 4-Year-Old 2001

4th Dam

C Aitkenbrae Starbuck Ada

13743730 Excellent-94 2E DOM 4*
5-06 2x 356d 30055 3.5 1043 3.5 1049
Life: 1554d 105150 3.4 3600 3.2 3356

- All-American Sr 3-Year-Old 1990
- All-American Produce of Dam 2000, 2001

FUTURE READY *Winter Edition*



PETITCLERC KING DOC ATHENE
SELLS AS LOT 16



PETITCLERC EMILIO ADENE VG-86
MATERNAL SISTER TO LOT 16
All-American Milking Yearling 2020

Lot 16

DYMENTHOLM & NICK SARBACKER
468 FALLSVIEW RD
DUNDAS, ON L9H 5E2
905-308-1008 DAVID

Woodcrest King Doc

840 3132417775 Excellent-90 *TY*TV*TL*TD
PTA +1574M +69F +54P 99R 12/21
PTA +2.2PL 3.14SCS -1.5DPR 2.4%DCE
PTA +3.54T +2.36UDC +2.10FLC 99R 12/21
GTPI +2783G GLPI +3260 Conf +10

Petitclerc Goldwyn Anouk

CAN 107441133 EX-93-2E-CAN 6*
5-06 2x 328d 35975 3.9 1387 3.3 1177
3-04 2x 365d 33814 4.8 1614 3.2 1074
6-05 2x 365d 30318 4.3 1292 3.5 1063
Life: 4 Lacs 135019 4.4 5880 3.4 4544
• Reserve All-Canadian Senior 2-Year-Old 2014
• HM All-Canadian Senior Yearling 2013

PETITCLERC KING DOC ATHENE

CAN 120422680 • A2A2
Born: June 6, 2020 Herd #: 2680
GTPI +2358 +802M +25F +21P +2.30T 12/21

Bred: July 22, 2021 to Peak Jagger-ET
(ultrasound female)

• Only flushed once: 20 embryos - 16 #1, 4 #2

Morningview McC Kingboy-ET

72044077 Excellent-92 *TV*TL*TY*TD
PTA +864M +23F +23P 99R 12/21
PTA +1.95T +1.59UDC +.29FLC GTPI +2337G

WBC-ZBW Mack Daddy-ET

840 3012506777 Very Good-88
3-01 3x 365d 39560 3.3 1303 3.4 1355
1-11 3x 365d 37410 3.1 1154 3.2 1188

Braedale Goldwyn

CAN 10705608 GP-CAN GM 12/11 *TV*TL
PTA -704M -7F -12P 99R 12/21
PTA +1.05T +.62UDC +.79FLC GTPI +1860G

Petitclerc Dundee Amistie

CAN 103734327 EX-90-7YR-CAN 9*
7-01 2x 365d 32447 4.7 1523 3.4 1111
5-06 2x 365d 33358 4.4 1464 3.3 1105
3-02 2x 365d 27811 3.9 1098 3.3 930
Life: 4 Lacs 132205 4.3 5628 3.4 4519

Maternal sisters to King Doc Athene

Petitclerc Emilio Adene VG-86

• All-American Milking Yearling 2020
• 1st Milking Yearling, NA Open Holstein Show 2020

Petitclerc Solomon Annice VG-85-CAN

3-00 2x 365d 27308 4.3 1171 3.5 944
• All-American Spring Calf 2017
• HM All-Canadian Juninor Calf 2017

Petitclerc Denver Alias

• 1st Junior Yearling, ON Summer Show 2021
• Canadian Champion Junior Calf 2020
• 1st Junior Calf, Fall Invitational Show 2020

3rd Dam

Petitclerc Storm Amy EX-92-2E-CAN 17*

7-04 2x 365d 33755 4.3 1457 3.1 1045
Life: 5 Lacs 171114 3.7 6336 3.2 5540
• Reserve All-Canadian Milking Yearling 2001

4th Dam

Petitclerc Star Amy GP-CAN

2-06 2x 310d 17169 3.4 582 3.4 575

5th Dam

Petitclerc Tab Aim EX-3E-CAN 8*

5-05 2x 321d 24522 4.0 983 3.2 789
Life: 6 Lacs 140069 3.9 5512 3.3 4641
• Grand Champion, Portneuf 1996



PETITCLERC GOLDWYN ANOUK EX-93-2E-CAN
DAM OF LOT 16; 2ND DAM OF LOTS 17 & 18
Reserve All-Canadian Senior 2-Year-Old 2014

Lot 17

FOUR #1 CONVENTIONAL EMBRYOS

- Embryos made with sorted semen
- Eligible for export

Lot 18

FOUR #1 CONVENTIONAL EMBRYOS

- Embryos made with sorted semen
- Eligible for export

DYMENTHOLM
 468 FALLSVIEW RD
 DUNDAS, ON L9H 5E2
 905-308-1008 DAVID

Mr Blondin Warrior-Red-ET

840 3139655530 99%RHA *TY *TV
 PTA -141M +0F -1P 85R 12/21
 PTA -1.8PL 2.86SCS -2.5DPR 3.3%DCE
 PTA +3.52T +2.22UDC +1.55FLC 80R 12/21
 GTPI +2057G GLPI +2580 Conf +8

Petitclerc King Doc Athene

CAN 120422680 • A2A2
 GTPI +2358 +802M +25F +21P +2.30T 12/21

Dymentholm Mr App Avalanche-TW

CAN 11957107 *RC *CV *TL *TY *TD
 PTA -94M -1F -4P 99R 12/21
 PTA +3.76T +2.85UDC +2.26FLC GTPI +2036G

Triplecrown-JW Door Wisp-ET

840 3128860372 VG-85-CAN *RC
 3-03 2x 365d 35587 4.0 1424 3.5 1246
 2-01 2x 310d 17068 4.0 688 3.5 589

Woodcrest King Doc

840 3132417775 Excellent-90 *TY *TV *TL *TD
 PTA +1574M +69F +54P 99R 12/21
 PTA +3.54T +2.36UDC +2.10FLC GTPI +2783G

Petitclerc Goldwyn Anouk

CAN 107441133 EX-93-2E-CAN 6*
 5-06 2x 328d 35975 3.9 1387 3.3 1177
 3-04 2x 365d 33814 4.8 1614 3.2 1074
 6-05 2x 365d 30318 4.3 1292 3.5 1063
 Life: 4 Lacs 135019 4.4 5880 3.4 4544
 • Reserve All-Canadian Senior 2-Year-Old 2014
 • HM All-Canadian Senior Yearling 2013

3rd Dam

Petitclerc Dundee Amistie EX-90-7YR-CAN 9*

7-01 2x 365d 32447 4.7 1523 3.4 1111
 Life: 4 Lacs 132205 4.3 5628 3.4 4519

4th Dam

Petitclerc Storm Amy EX-92-2E-CAN 17*

7-04 2x 365d 33755 4.3 1457 3.1 1045
 Life: 5 Lacs 171114 3.7 6336 3.2 5540

- Reserve All-Canadian Milking Yearling 2001

5th Dam

Petitclerc Star Amy GP-CAN

2-06 2x 310d 17169 3.4 582 3.4 575

6th Dam

Petitclerc Tab Aim EX-3E-CAN 8*

5-05 2x 321d 24522 4.0 983 3.2 789
 Life: 6 Lacs 140069 3.9 5512 3.3 4641

- Grand Champion, Portneuf 1996



**VOGUE LMF LOVE ACTUALLY VG-89-CAN
DAM OF LOTS 19 & 20**

Reserve Intermediate Champion, ON Summer Show 2020

Lot 19

FOUR #1 CONVENTIONAL EMBRYOS

- Embryos made with sorted semen
- Eligible for export

S-S-I Pr Renegade-ET

840 3142352961 GM 8/21 *TY *TV
PTA +1041M +89F +57P 97R 12/21
PTA +3.4PL 2.85SCS +1.1DPR 2.8%DCE
PTA +1.67T +1.50UDC +1.20FLC 94R 12/21
GTPI + 2913G GLPI +3681 Conf +6 MS +6

Vogue LMF Love Actually

CAN 12687191 VG-89-3YR-CAN EX-91-MS
GLPI +3009 Conf +9 12/21
GTPI +2265 +284M +29F +18P +2.26T 12/21
3-03 2x 326d 31186 4.2 1303 3.4 1056
2-04 2x 305d 21539 4.2 902 3.5 750
• Nom Canadian Champion Junior 3-Year-Old 2020
• 1st Junior 3-Year-Old & Reserve Int Champion,
ON Summer Show 2020
• 1st Junior 2-Year-Old & Res Grand Champion,
Brant-Wentworth 2019

Lot 20

THREE #1 CONVENTIONAL EMBRYOS

- Embryos made with sorted semen
- Eligible for export

Jaltaoak

FRA 6208148075 *TY *TV
PTA +901M +86F +46P 92R 12/21
PTA +.98T +.44UDC +.32FLC GTPI +2686

S-S-I MIngtn 10398 11588-ET

840 3133370913 Very Good-85
2-00 2x 365d 31673 3.8 1184 3.2 1009

Mapel Wood Light My Fire

CAN 12111793
PTA +661M +29F +29P 98R 12/21
PTA +2.11T +2.06UDC +.51FLC GTPI +2419

Belfast Doorman Lovestruck

CAN 107656116 VG-88-3YR-CAN 3*
3-05 2x 365d 31219 3.5 1093 3.5 1087
2-03 2x 321d 35479 4.2 1477 3.5 1243
• Reserve All-Canadian Intermediate Yearling 2015
• All-Canadian Intermediate Calf 2014

DYMENTHOLM, JUSTIN HOGGE & WADELAND DAIRY
468 FALLSVIEW RD
DUNDAS, ON L9H 5E2
905-308-1008 DAVID

3rd Dam

Belfast Goldwyn Lasenza EX-95-3E-CAN 12*

7-06 2x 365d 42657 4.0 1689 3.3 1407
Life: 5 Lacs 211254 4.0 8525 3.5 7355
• All-Canadian Junior 2-Year-Old 2013
• All-American Junior 2-Year-Old 2012

4th Dam

Lylehaven Durham Lekysya-ET EX-92-CAN 5*

3-07 2x 365d 34661 4.2 1444 3.4 1190
Life: 3 Lacs 134855 4.4 5897 3.7 4958
• HM All-Canadian Senior 3-Year-Old 2011
• Reserve All-American Senior 2-Year-Old 2010
• HM All-Canadian Senior 2-Year-Old 2010

5th Dam

Lylehaven Leah-ET EX-91 2E 2*

6-08 2x 365d 46480 3.8 1764 3.1 1429
Life: 3 Lacs 147651 3.9 5703 3.3 4808

6th Dam

Thiersant Lili Starbuck-ET EX-94 5E 6*

5-00 2x 358d 30190 4.6 1387 3.2 979
Life: 8 Lacs 238804 4.7 11288 3.4 8124

FUTURE READY *Winter Edition*



HODGLYNN LAMBDA BRYNN
SELLS AS LOT 21

4-H Champion, Ontario Summer Show 2021



OURIVER GOLDWYN BLITZ EX-94 4E
2ND DAM OF LOT 21

1st 5-Year-Old, Midwest Fall National Show 2014

Lot 21

HOWES HOLSTEINS, STANHOW HOLSTEINS &
KEATON PHOENIX
7086 SPRINGFIELD RD, RR 6
ALYMER, ON N5H 2R5
519-282-5245 BRENT HOWE

Farnear Delta-Lambda-ET

840 3125993715 GM 12/20 *TY *TV
PTA +1123M +47F +43P 99R 12/21
PTA +4.6PL 2.75SCS -.7DPR 2.4%DCE
PTA +2.72T +2.91UDC +.79FLC 99R 12/21
GTPI +2758G GLPI +3551 Conf +15 MS +11

Hodglynn Blitz Bella

CAN 11797635 EX-92-3E-CAN EX-94-MS
4-07 2x 330d 30697 4.3 1312 3.3 1019
5-08 2x 301d 29063 4.4 1285 3.3 959
3-00 2x 365d 21301 4.9 1151 3.5 827
1-11 2x 313d 16660 4.3 721 3.5 582
6-11 2x 246d 28263 5.9 1671 3.2 908 RIP

• *1st Junior 2-Year-Old, Bruce-Grey 2016*

HODGLYNN LAMBDA BRYNN

CAN 13742727
Born: March 2, 2021 HMID: 348

Mr Mogul Delta 1427-ET

72128216 GM 8/20 *TY *TV
PTA +939M +58F +33P 99R 12/21
PTA +1.18T +1.80UDC +.53FLC GTPI +2655G

EDG Lorette Uno 2198-ET

72437745 Excellent-91 2E
4-02 2x 330d 31660 4.1 1289 3.6 1128
Life: 1540d 131380 3.9 5183 3.6 4699

Gillette Windbrook-ETS

CAN 7816429 EX-97-CAN EXTRA'10 *TV *TL *TY *TD
PTA -48M +17F +6P 99R 12/21
PTA +1.59T +.75UDC +1.56FLC GTPI +1983G

Ouriver Goldwyn Blitz

CAN 9526193 Excellent-94 EEEEE 4E EX-97-MS
8-10 3x 305d 43320 4.4 1911 3.6 1547
7-01 3x 305d 47250 3.9 1847 3.6 1720
Life: 2933d 322258 3.9 12580 3.7 11842

• *1st 5-Year-Old, Midwest Fall National 2014*
• *Reserve Senior Champion, IA State Show 2014*
• *1st Junior 3-Year-Old, Bruce-Grey 2012*

BRYNN!

- *4th Junior Calf, National Holstein Show 2021*
- *3rd Junior Calf, 1st 4-H & 4-H Champion, Ontario Summer Show 2021*
- *1st Junior Calf & HM Junior Champion, Elgin 2021*
- *5th Junior Calf, 1st 4-H & HM 4-H Champion, Autumn Opportunity Show 2021*

3rd Dam

Ouriver Dundee Barbie EX-90-CAN

5-05 2x 365d 33014 3.6 1182 3.3 1074
Life: 5 Lacs 112946 3.6 4032 3.3 3706

4th Dam

Ouriver Lyster Belinda VG-85-2YR-CAN 1*

3-05 2x 365d 31160 3.3 1064 3.2 1003

FUTURE READY *Winter Edition*



SAVAGE-LEIGH GOLD LALA-ET EX-90
DAM OF LOT 22



SAVAGE-LEIGH LALAS FIRST-ET VG-88-CAN
SELLS AS LOT 22
Nominated All-American Fall Calf 2018

Lot 22

SEBASTIEN DION
STE-MARIE, QC
519-320-0656 SEBASTIEN DION

SAVAGE-LEIGH LALAS FIRST-ET

840 3123797286 VG-88-3YR-CAN
Born: September 3, 2017

Due: March 4, 2022 to
Avant-Garde-I Summerfest-ET 94H019370

LALAS FIRST!

- *Nominated All-American Fall Calf 2018*
- *Reserve Junior All-American Fall Calf 2018*
- *Supreme Junior Champion, All-American Dairy Show 2018*
- *Champion Bred & Owned Heifer, International Junior Holstein Show 2018*

Val-Bisson Doorman-ET

CAN 107281711 EX-90-CAN ST'16 *TV *TY
PTA -446M +14F +9P 99R 12/21
PTA +.5PL 2.64SCS -2.5DPR 2.6%DCE
PTA +2.44T +1.58UDC +.67FLC 99R 12/21
GTPI +2164G GLPI +2883 Conf +8 MS +7

Savage-Leigh Gold Lala-ET

840 3007810662 Excellent-90 EEEEE @ 4-00
3-04 2x 239d 26350 4.0 1045 3.3 870
2-06 2x 243d 17440 4.6 796 3.5 603
• *Nominated All-American Winter Calf 2015*
• *5th Winter Calf, International Show 2015*
• *1st Winter Calf, Eastern Fall National 2015*
• *1st Winter Yearling, Eastern Fall National 2016*

De-Su 521 Bookem-ET

66636657 Excellent-90 GM 8/15 *TV *TL *TY *TD
PTA +825M +3F +31P 99R 12/21
PTA +.48T +.44UDC +.42FLC GTPI +2255G

Val-Bisson Shottle Imelda-ET

CAN 106173432 Excellent-94 10*
4-03 2x 365d 40505 3.8 1550 3.6 1455
6-08 2x 322d 32340 4.6 1483 3.9 1246

Braedale Goldwyn

CAN 10705608 GP-CAN GM 12/11 *TV *TL
PTA -704M -7F -12P 99R 12/21
PTA +1.05T +.62UDC +.79FLC GTPI +1860G

Savage-Leigh Leona-ET

61604187 Excellent-96 EEEEE 2E GMD
5-05 2x 365d 42050 4.3 1796 3.2 1343
7-01 2x 365d 37060 4.5 1679 2.9 1090
Life: 2412d 219870 4.2 9160 3.2 7070
• *Nominated All-American 125,000 Lb Cow 2014*
• *Nominated All-American 125,000 Lb Cow 2013*
• *Reserve All-American 125,000 Lb Cow 2012*

3rd Dam

Savage-Leigh Licorice-ET EX-92 GMD DOM
4-02 2x 365d 51220 4.3 2179 3.1 1596
Life: 1018d 113740 4.4 4968 3.2 3643
• *HHM All-American 5-Year-Old 2006*

5th Dam

Savage-Leigh Bellwood Linda EX-92 2E GMD
2-10 2x 365d 40240 5.8 2349 3.4 1358
• *Nom All-American Jr 3-Year-Old 1999*

6th Dam

Savage-Leigh Star Linda-ET VG-87 EX-MS GMD
2-02 2x 365d 30890 4.0 1236 3.1 952

7th Dam

Savage-Leigh Glenview Linda EX-90 GMD
6-08 2x 365d 41820 4.6 1936 3.0 1247
Life: 1892d 150300 4.4 6636 3.2 4813

FUTURE READY *Winter Edition*



SAVAGE-LEIGH LEONA-ET EX-96 2E
2ND DAM OF LOT 22; 3RD DAM OF LOT 23
Reserve All-American 125,000 Lb Cow 2012



SUNVIEW SELECT SUNRISE
SELLS AS LOT 23

Lot 23

SEBASTIEN DION & LEGEND-MAKER HOLSTEINS
 STE-MARIE, QC
 519-320-0656 SEBASTIEN DION

SUNVIEW SELECT SUNRISE

CAN 13909580
 Born: March 27, 2021

Avant-Garde Unix Select-ET

840 3149135073 99%RHA *TY *TV
 PTA -426M +32F -3P 82R 12/21
 PTA -.4PL 2.84SCS -.5DPR 2.1%DCE
 PTA +3.09T +2.52UDC +.78FLC 81R 12/21
 GTPI +2326G GLPI +28 Conf +11 MS +11

Savage-Leigh Lalas First-ET

840 3123797286 VG-88-3YR-CAN
 • *Nominated All-American Fall Calf 2018*
 • *Reserve Junior All-American Fall Calf 2018*
 • *Supreme Junior Champion, All-American Dairy Show 2018*
 • *Champion Bred & Owned Heifer, International Junior Holstein Show 2018*

Croteau Lesperron Unix-ET

CAN 107567492 EX-96-CAN ST'17 *TY *TV
 PTA +536M +24F +11P 99R 12/21
 PTA +2.39T +2.40UDC +.15FLC GTPI +2351G

Walnutlawn McCutchen Summer-ET

CAN 11120480 Excellent-95-2E 9*
 7-02 2x 365d 37010 4.7 1735 3.5 1285
 • *Nom Canadian Champion Mature Cow 2020*

Val-Bisson Doorman-ET

CAN 107281711 EX-90-CAN ST'16 *TY *TV
 PTA -446M +14F +9P 99R 12/21
 PTA +2.44T +1.58UDC +.67FLC GTPI +2164G

Savage-Leigh Gold Lala-ET

840 3007810662 Excellent-90 EEEEE @ 4-00
 3-04 2x 239d 26350 4.0 1045 3.3 870
 2-06 2x 243d 17440 4.6 796 3.5 603
 • *Nominated All-American Winter Calf 2015*
 • *5th Winter Calf, International Show 2015*
 • *1st Winter Calf, Eastern Fall National 2015*
 • *1st Winter Yearling, Eastern Fall National 2016*

3rd Dam

Savage-Leigh Leona-ET EX-96 EEEEE 2E GMD
 5-05 2x 365d 42050 4.3 1796 3.2 1343
 Life: 2412d 219870 4.2 9160 3.2 7070
 • *Nominated All-American 125,000 Lb Cow 2014*
 • *Nominated All-American 125,000 Lb Cow 2013*
 • *Reserve All-American 125,000 Lb Cow 2012*

Savage-Leigh Licorice-ET EX-92 GMD DOM

4-02 2x 365d 51220 4.3 2179 3.1 1596
 Life: 1018d 113740 4.4 4968 3.2 3643
 • *HHM All-American 5-Year-Old 2006*

5th Dam

Savage-Leigh Bellwood Linda EX-92 2E GMD
 2-10 2x 365d 40240 5.8 2349 3.4 1358
 • *Nom All-American Jr 3-Year-Old 1999*

6th Dam

Savage-Leigh Star Linda-ET VG-87 EX-MS GMD
 2-02 2x 365d 30890 4.0 1236 3.1 952

7th Dam

Savage-Leigh Glenview Linda EX-90 GMD
 6-08 2x 365d 41820 4.6 1936 3.0 1247
 Life: 1892d 150300 4.4 6636 3.2 4813



HODGLYNN AWESOME BIANCA
SELLS AS LOT 24



TERRYLEA GOLDWYN BOMBSHELL VG-88-CAN
DAM OF LOT 24
Canadian Champion Senior 2-Year-Old 2020

Lot 24

HOWES HOLSTEINS, HODGLYNN, WEAVERCROFT,
WILLOWHAVEN & TERRYLEA
7086 SPRINGFIELD RD, RR 6
ALYMER, ON N5H 2R5
519-282-5245 BRENT HOWE

Luck-E Awesome-Red

72186769 *CV*TV*TY*TL*TD
PTA -1697M -59F -55P 99R 12/21
PTA -1.2PL 3.17SCS -2.2DPR 3.8%DCE
PTA +2.03T +2.78UDC +.75FLC 99R 12/21
GTPI +1415G GLPI +2155 Conf +10 MS +11

Terrylea Goldwyn Bombshell

CAN 12848800 VG-88-3YR-CAN
2-10 2x 360d 27500 3.6 994 3.2 882
1-10 2x 276d 17522 3.7 646 3.3 578
• *Canadian Champion Senior 2-Year-Old 2020*
• *North American Champion Sr 2-Year-Old 2020*
• *1st Senior 2-Year-Old, ON Summer Show 2020*
• *1st Senior 2-Year-Old, ON Fall Show 2020*
• *1st Milking Yearling, Bruce-Grey 2019*

HODGLYNN AWESOME BIANCA

CAN 14156492 *RC
Born: July 28, 2021 HMID: 374
• *The first live offering from Bombshell!*

Apples Absolute-Red-ET

139358472 Excellent-94 *CV*TL*TV*TD
PTA -1888M -13F -24P 99R 12/21
PTA +2.22T +2.43UDC +1.63FLC GTPI +1526G

Luck-E Advent Asia-ET

63437444 Excellent-94 3E *RC
6-02 2x 365d 40150 4.9 1984 3.3 1337
Life: 1282d 113730 5.1 5814 3.4 3860

Braedale Goldwyn

CAN 10705608 GP-CAN GM 12/11 *TV*TL
PTA -704M -7F -12P 99R 12/21
PTA +1.05T +.62UDC +.79FLC GTPI +1860G

Rainyridge Sanchez Beth

CAN 10935957 EX-92-6YR-CAN 6*
5-08 2x 365d 35278 4.0 1396 2.9 1027
3-09 2x 365d 30763 4.2 1290 3.0 913
2-03 2x 365d 29284 3.8 1116 3.0 888
Life: 3 Lacs 124930 4.0 4938 3.1 3814

Full sister to Goldwyn Bombshell

Willowhaven Goldwyn Bliss VG-89-CAN 4*
4-08 2x 365d 37575 4.3 1598 3.1 1177

Dam of:

Garay Awesome Beauty-ET VG-88-2YR-CAN

- *All-American Junior 2-Year-Old 2018*
- *All-Canadian Junior 2-Year-Old 2018*

3rd Dam

Rainyridge Talent Barbara EX-95 *RC 14*
3-04 2x 365d 34465 3.6 1257 3.3 1133
Life: 1266d 104815 3.9 4064 3.3 3457

- *Unanimous All-American 5-Year-Old 2010*
- *Unanimous All-Canadian 5-Year-Old 2010*

4th Dam

RF Outside Breeze-ET EX-95 EEEEE 2E 2*
5-03 2x 365d 37607 4.3 1623 3.3 1237
Life: 1896d 165379 4.6 7560 3.6 5973

- *Grand Champion Southern Spring Show 2011*

5th Dam

Rayverley Briana Milan-ET EX-2E-CAN 6*
6-03 2x 365d 27075 3.4 928 3.2 862

6th Dam

Rainyridge Tony Beauty EX-5E-CAN 9*
10-5 2x 365d 29081 3.5 1005 3.1 913
Life: 8 Lact 199869 3.3 6592 3.2 6455

- *All-Canadian Mature Cow 1992-93-95-99*
- *All-American Aged Cow 1992-95-99*
- *Supreme Champion WDE 1995 & 1999*

FUTURE READY *Winter Edition*



IDEE WINDBROOK LYNZI EX-95-2E-CAN
SAME MATERNAL FAMILY AS LOT
Supreme Champion, Royal Winter Fair 2019

Lot 25

STEPHENS GENETICS
 TROY, ON
 905-317-8252 JEFF

Luck-E America 684-ET

72186883 Excellent-92 *RC
 PTA -863M -15F -13P 90R 12/21
 PTA -.5PL 3.02SCS -2.7DPR 3.6%DCE
 PTA +3.14T +2.80UDC +1.91FLC 87R 12/21
 GTPI +1962G GLPI +2465 Conf +12 MS +8

Fradon Douglas Lacey

CAN 13089608 VG-86-2YR-CAN
 2-01 2x 234d 13395 3.4 456 3.2 434 RIP
 • 1st Intermediate Calf, Brant-Wentworth 2019

Same close maternal family as

Idee Windbrook Lynzi EX-95-2E-CAN

- 2020 Candian Cow of the Year
- All-Canadian Mature Cow 2020
- All-Canadian 5-Year-Old 2019
- Supreme Champion, Royal Winter Fair 2019

GREENPINE AMERICA LYDEE

CAN 13868624
 Born: January 1, 2021 HMID: 425

Dymentholm Mr App Avalanche-TW

CAN 11957107 *RC *CV *TY *TL *TD
 PTA -94M -1F -4P 99R 12/21
 PTA +3.76T +2.85UDC +2.26FLC GTPI +2036G

Luck-E Advent Asia-ET

63437444 Excellent-94 3E *RC
 6-02 2x 365d 40150 4.9 1984 3.3 1337
 Life: 1282d 113730 5.1 5814 3.4 3860

Barnkamper Marilyn Douglas-ET

NLD 947618726 *TY *TV
 PTA -11M -24F +11P 89R 12/21
 PTA +2.58T +2.01UDC +1.10FLC GTPI +2076G

Lynvail AF Lucinda-ET

CAN 141694591 EX-91-3E-CAN EX-94-MS
 7-09 2x 365d 32646 4.1 1351 3.2 1052
 6-03 2x 365d 32132 4.1 1325 3.3 1074
 5-02 2x 309d 21371 4.6 974 3.4 734
 Life: 7 Lacs 167638 4.3 7200 3.3 5591

3rd Dam

Idee Goldwyn Liza EX-90 3*

3-00 2x 305d 27811 4.6 1283 3.6 1008
 • HM All-American Spring Calf 2007

4th Dam

Idee Louis Luise EX-94-2E-CAN 20*

5-02 2x 365d 32657 3.9 1290 3.4 1107
 Life: 5 Lacs 162397 4.1 6612 3.5 5697

- Nominated All-Canadian 4-Year-Old 2006

5th Dam

Idee Bellwood Ladonna VG-87-CAN 2*

4-05 2x 319d 26140 4.1 1085 3.3 858

6th Dam

C Ravenswell Lydia EX-92 EEEE DOM 19*

5-01 2x 365d 24578 4.6 1125 3.2 779

7th Dam

Spring Farm Miss Lynn-ET VG-CAN

2-11 2x 329d 22335 4.0 888 3.6 811

8th Dam

Spring Farm Miss Connie VG-88 2*

8-00 2x 305d 21420 3.9 840

Life: 5 Lact 108757 3.9 4273

9th & 10th Dams

Spring Farm Miss Citation VG-87 3*

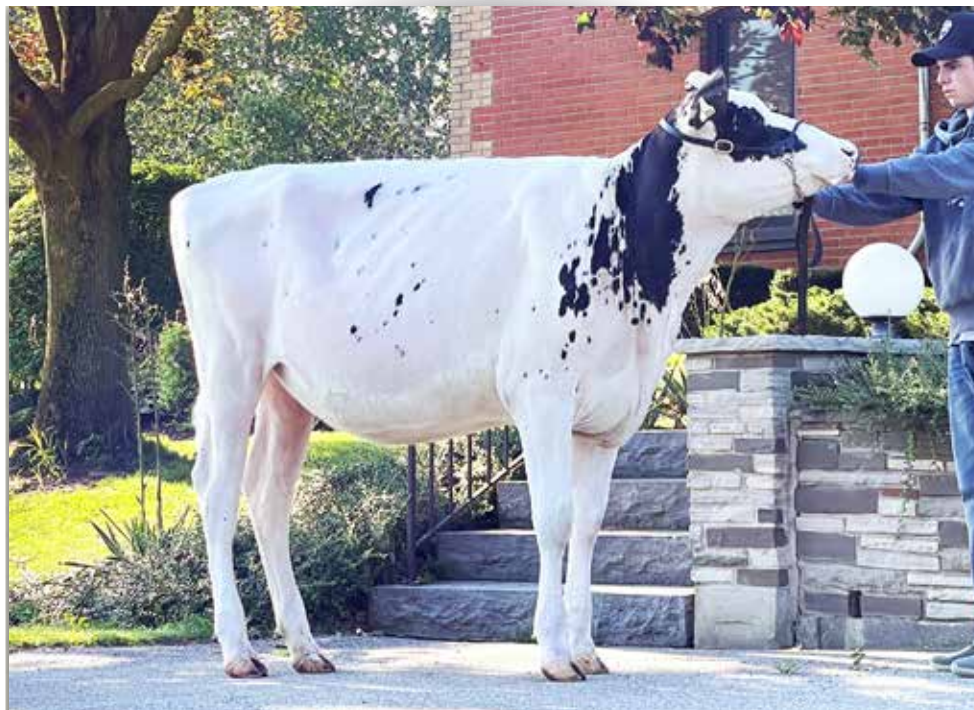
6-04 2x 365d 27725 3.8 1054

Life: 11 Lacs 215519 3.7 7952

Spring Farm Miss Pathfinder EX-CAN 8*

Life: 12 Lact 242021 3.6 8814

Next three dams VG & EX-CAN



GLENIRVINE VICTOR OCTAVIA
SELLS AS LOT 26

Lot 26

DYMENTHOLM
468 FALLSVIEW RD
DUNDAS, ON L9H 5E2
905-308-1008 DAVID

GLENIRVINE VICTOR OCTAVIA

CAN 11973921
Born: June 9, 2020 HMID: 211

Bred: October 15, 2021 to
Raspberry Revere-Red 200HO11819

Legend-Maker Victor

CAN 12556108 *TY *TV A2/A2
PTA +26M +26F +28P 92R 12/21
PTA +0.2PL +.2DPR 2.87SCS 2.7%DCE
PTA +2.22T +1.79UDC +.28FLC 90R 12/21
GTPI +2389G GLPI +3232 Conf +13 MS +11

Glenirvine Elude Ottilia

CAN 11973863 EX-90-2E-CAN
3-02 2x 306d 27474 4.6 1252 3.2 880
4-03 2x 306d 27306 4.5 1230 3.1 847
2-01 2x 305d 21378 4.4 937 3.3 701
5-03 2x 137d 12734 4.6 589 3.0 384 RIP

Kerndtway Kingpin-ET

69502423 Excellent-92 ST'17
PTA +153M +28F +11P 99R 12/21
PTA +1.76T +1.02UDC +.10FLC GTPI +2239G

Farnear-I L Gold Vivid

CAN 12031384 EX-92-CAN 1*
4-08 2x 365d 31554 4.0 1250 3.5 1118
3-03 2x 365d 31890 3.8 1217 3.5 1113

Silverridge V Elude

CAN 11761809 *TV *TY
PTA +922M +29F +21P 98R 12/21
PTA +1.22T +.08UDC +.78FLC GTPI +2205G

Glenirvine Sid Otis

CAN 11973832 VG-86-3YR-CAN
2-10 2x 306d 17665 5.0 880 3.5 617
2-00 2x 315d 17273 4.7 805 3.5 595

3rd Dam

Glenirvine Fever Oatie VG-85-CAN

4-00 2x 328d 27582 4.4 1213 3.1 853
Life: 5 Lacs 113976 4.5 5132 3.2 3682

4th Dam

Glenirvine Dennison Oasis VG-86-CAN

3-01 2x 308d 19129 3.6 679 3.0 573

FUTURE READY *Winter Edition*



LUCK-E MCGUCCI AFRO-RED-ET EX-92
DAM OF LOT 27

1st Junior 3-Year-Old, Midwest R&W Spring Show 2018



LUCK-E ADVENT ASIA-ET EX-94 2E
2ND DAM OF LOT 27

Lot 27

WAYBRU HOLSTEINS
ELMIRA, ON
519-664-1300

LUCK-E-I DICE APPRECIATE-RED

CAN 13651781

Born: April 4, 2020 HMID: 412

Due: March 17, 2022 to Apples Absolute-Red (sexed)

LOH Dice-Red

DEU 359824500 *TC *TY *TV

PTA -118M -39F -6P 86R 12/21

PTA +.1PL 3.28SCS -1.4DPR 3.2%DCE

PTA +2.76T +2.22UDC +1.16FLC 83R 12/21

GTPI +1872G GLPI +2296 Conf +9 MS +7

Luck-E McGucci Afro-Red-ET

73278355 Excellent-92

1-11 2x 285d 18360 4.7 869 3.6 666

• *1st Jr 3-Year-Old, Midwest R&W Spring Show 2018*

• *Dam of*

Luck-E Aristocrat-Red +2.45T @ St. Jacobs

Mr D Apple Diamondback

840 3013721049 Excellent-93 *RC *TV *TL *TY

PTA -400M -25F -1P 99R 12/21

PTA +2.44T +1.95UDC +1.43FLC GTPI +1873G

Luck-E Redburst Aphrodite-Red

DEU 1603298333 VG-87-NLD

Mr Apples McGucci-ET

72353438 99%RHA *RC *TY *TL *TD

PTA -1601M +10F -11P 96R 12/21

PTA +2.65T +1.95UDC +2.89FLC GTPI +2072G

Luck-E Advent Asia-ET

63437444 Excellent-94 2E *RC

6-02 2x 365d 40150 4.9 1984 3.3 1337

Life: 1282d 113730 5.1 5814 3.4 3860

• *Dam of*

Luck-E Awesome-Red +2.06T @ ST Genetics

3rd Dam

Luck-E Blitz Australia-ET VG-87 GMD DOM

2-02 2x 365d 37990 4.0 1528 3.0 1131

4th Dam

Luck-E Skychief Arizona-ET EX-90 GMD DOM

5-01 2x 365d 56279 5.1 2873 3.1 1748

Life: 3 Lacs 125490 5.2 6512 3.4 4226

5th Dam

Hart-Lyn Starbuck Ashley EX-94 2E GMD DOM

6-06 2x 365d 35719 4.2 1504 3.2 1131

Life: 5 Lacs 124037 4.0 4991 3.2 4001

6th Dam

Kachina Valiant Act-ET VG-86

7-05 2x 365d 23450 4.4 1041 3.3 765

Life: 6 Lacs 110051 4.6 5040 3.4 3741

7th Dam

Dodeb Matt Actress EX-93 3E

10-1 2x 365d 21431 4.5 968

Life: 7 Lacs 141870 4.3 6058

FUTURE READY *Winter Edition*

Lot 28

ALLARWAY HOLSTEINS
1766 COLBORNE ST. E, RR 1
BRANTFORD, ON N3T 5L4
519-752-3245

Walnutlawn Sidekick

CAN 12508113 VG-85-CAN *TY *TV A2/A2
PTA -1030M +13F -9P 96R 12/21
PTA +.1PL 2.72SCS -.5DPR 2.1%DCE
PTA +2.92T +2.48UDC +.96FLC 95R 12/21
GTPI +2227G GLPI +3245 Conf +16 MS +14

Blayjoy Callen Marble

CAN 12786670 VG-87-3YR-CAN
3-00 2x 365d 29542 3.4 992 3.1 922
1-11 2x 365d 20620 3.4 692 3.2 650
• 3rd Sr 3-Year-Old, Brant-Wentworth 2021
• 3rd Senior Yearling, ON Summer Show 2019

ALLARWAY ST KICK MARMALADE

CAN 12764943 VG-85-2YR-CAN
Born: August 4, 2019 HMID: 5
1-11 2x 117d 7088 3.5 247 3.3 234 RIP

Fresh: July 30, 2021
Bred: October 10, 2021 to
Croteau Lesperron Unix-ET 777H003913

Willsbro Abbott

GBR 388380500583 *TY *TV A2/A2
PTA -298M +41F +8P 98R 12/21
PTA +177T +1.84UDC +.53FLC GTPI +2426G

Walnutlawn McCutchen Summer-ET

CAN 11120480 Excellent-95 EEEEE 9*
7-02 2x 365d 37010 4.7 1735 3.5 1285
• Nom All-Canadian Mature Cow 2020

OCD 1stClass Callen-ET

840 3125170885 Very Good-86
PTA -292M -3F -25P 99R 12/21
PTA +1.80T +1.51UDC +.50FLC GTPI +1994

Blayjoy Brokaw Marble

CAN 12184791 VG-86-3YR-CAN
4-04 2x 336d 31940 3.9 1250 3.4 1076
3-00 2x 365d 33688 3.6 1204 3.4 1135
1-11 2x 325d 21023 3.8 805 3.5 732
Life: 4 Lacs 102554 3.7 3812 3.3 3422

MARMALADE!

- 2nd Jr 2-Year-Old, Eastern ON Invitational 2021
- 2nd Jr 2-Year-Old, Brant-Wentworth 2021

3rd Dam

Blayjoy Magnitism Maya VG-85-CAN
3-01 2x 321d 23680 4.0 957 3.3 783

4th Dam

Blayjoy Rudolph Macy VG-85-CAN
7-06 2x 341d 26885 3.8 1019 3.4 915
Life: 9 Lacs 193015 3.7 7119 3.3 6459

5th Dam

Aitkenbrae Charles Missy GP-81-CAN
6-01 2x 365d 23794 3.7 886 3.2 758

6th Dam

Christhill Roland Merna VG-86-CAN
2-02 2x 365d 20611 3.9 811 3.9 615

7th Dam

Murland Mary Sheik VG-85-CAN 2*
7-07 2x 313d 20117 4.0 800 3.2 635
Life: 11 Lacs 176716 4.0 6993 3.3 5877

Lot 29

BENSCHOP FARMS
4666 MEARN'S AVE, RR 4
BOWMANVILLE ON L1C 6N9
905-263-8530

Golden-Oaks Master-ET

840 3139216917 *TR *TP *TC *TL *TD
PTA -155M +11F -5P 81R 12/21
PTA -2.6PL 2.86SCS -3.3DPR 3.2%DCE
PTA +3.69T +2.90UDC +1.26FLC 80R 12/21
GTPI +2078G GLPI +2739 Conf +13 MS +10

Benrise Chief Toffee

CAN 13044701 VG-88-3YR-CAN EX-90-MS
3-00 2x 213d 20800 4.5 941 3.0 613 RIP
2-00 2x 310d 19606 4.4 864 3.1 615

BENRISE MASTER TRACY

CAN 14007752
Born: March 8, 2021 HMID: 501

Dymentholm Mr App Avalanche-TW

CAN 11957107 *RC *CV *TY *TL *TD
PTA -94M -1F -4P 99R 12/21
PTA +3.76T +2.85UDC +2.26FLC GTPI +2036G

Drolie Doorman Macy-ET

CAN 109038878 Excellent-90 EX-MS TR TL TD
3-11 3x 305d 32460 4.1 1346 3.1 994
1-11 2x 365d 27040 5.3 1422 3.4 917

Stantons Chief-ET

840 3129015989 *TY *TV A2A2
PTA +659M +8F +17P 96R 12/21
PTA +2.04T +2.29UDC +.44FLC GTPI +2282G

Benrise Lauth Toots

CAN 12258936 EX-90-5YR-CAN
5-04 2x 269d 27289 4.5 1226 3.0 813 RIP
2-05 2x 365d 24090 3.8 924 3.1 743
4-03 2x 265d 21777 4.1 893 3.1 675

3rd Dam

Benrise Pronto Tumara VG-85-CAN
8-00 2x 365d 30340 3.9 1168 3.0 897
Life: 6 Lacs 156447 3.8 5979 3.0 4764

4th Dam

Dunwood Golden Bstar Doris EX-90 9*
6-04 2x 365d 36969 3.3 1226 2.9 1089
Life: 6 Lacs 184906 3.5 6444 3.2 5888

5th Dam

Dunwood Golden Starbuck Dot EX-91 2E
5-06 2x 365d 30010 3.7 1124 3.3 979
Life: 2563d 133308 3.8 5018 3.3 4356

6th Dam

Dunwood Golden Pete Dottie EX-90
5-11 2x 365d 28009 3.7 1087 3.1 906
Life: 3287d 197598 3.6 7022 3.1 6100

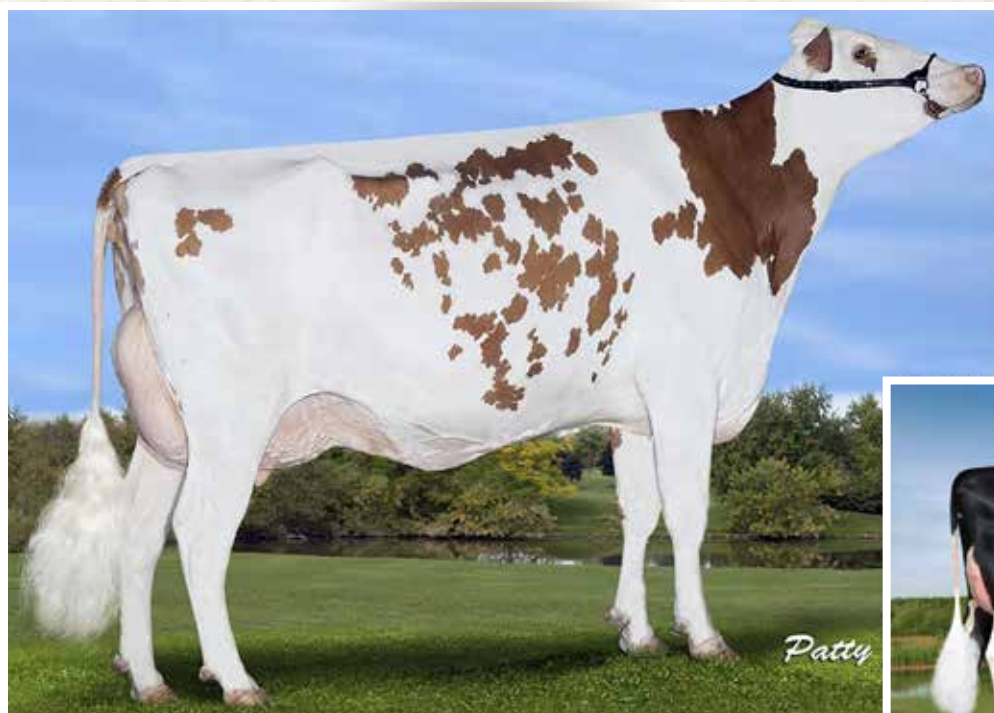
7th Dam

Dunwood Golden Daisy May EX-90
4-05 2x 300d 18479 3.7 677

8th Dam

Dunwood Golden Net Doris VG-85
2-03 2x 305d 15390 3.8 591

FUTURE READY *Winter Edition*



LIDDLEHOLME APPLESUC-RED EX-93
2ND DAM OF LOT 30



MS APPLES AILEEN-ET EX-92
3RD DAM OF LOT 30

Lot 30

BLUCRIK HOLSTEINS
6105 BUELHER LINE, RR 1
WALLENSTEIN, ON NOB 250
519-698-2928

Golden-Oaks Master-ET

840 3139216917 *TR *TP *TC *TL *TD
PTA -155M +11F -5P 81R 12/21
PTA -2.6PL 2.86SCS -3.3DPR 3.2%DCE
PTA +3.69T +2.90UDC +1.26FLC 80R 12/21
GTPI +2078G GLPI +2739 Conf +13 MS +10

Dymenthalm Jordy Applepie-Red-ET

CAN 13089602

Full sister to Applepie-Red

Dymenthalm Jordy Apple Sauce-Red VG-86-CAN

BLUCRIK MASTER APPLE FRITTER

CAN 13989930 *RC
Born: June 6, 2021 Tag: 490

Dymenthalm Mr App Avalanche-TW

CAN 11957107 *RC *CV *TY *TL *TD
PTA -94M -1F -4P 99R 12/21
PTA +3.76T +2.85UDC +2.26FLC GTPI +2036G

Drolie Doorman Macy-ET

CAN 109038878 Excellent-90 EX-MS TR TL TD
3-11 3x 305d 32460 4.1 1346 3.1 994
1-11 2x 365d 27040 5.3 1422 3.4 917

Cycle McGucci Jordy-Red

840 3131666411 *CV *TY
PTA -1139M -29F -44P 99R 12/21
PTA +2.96T +2.24UDC +3.15FLC GTPI +1691G

Liddleholme Applesuc-Red-ET

840 3129745761 EX-93-5YR-CAN 94-MS
3-05 2x 328d 24195 4.5 1078 3.2 778
4-09 2x 325d 21504 3.9 844 3.5 750
2-00 2x 318d 19046 4.5 862 3.4 637

3rd Dam

Ms Apples Aileen-ET EX-92 EEEEE 2E *RC
2-04 2x 365d 20850 5.1 1069 3.7 772

4th Dam

KHW Regiment Apple-Red-ET EX-96 4E 37*
9-01 2x 365d 36750 4.3 1582 3.3 1211
Life: 2898d 240640 4.7 11394 3.7 9013
• All-American R&W 125,000 Lb Cow 2013

5th Dam

Kamps-Hollow Altitude-ET EX-95 2E DOM 2*
7-00 2x 365d 39690 4.7 1849 3.5 1385
Life: 1844d 144460 4.4 6295 3.7 5288

6th Dam

Clover-Mist Alisha-ET EX-93 3E DOM
8-07 2x 365d 36920 4.2 1553 3.4 1258
Life: 2999d 226470 4.7 10659 3.6 8149

7th Dam

Clover-Mist Augy Star-ET EX-94 4E DOM
7-10 2x 365d 43140 5.0 2136 3.3 1421
Life: 2486d 206250 4.7 9793 3.5 7187

8th thru 10th Dams

D-R-A August EX-96 4E DOM
8-05 3x 365d 27460 4.3 1187 3.2 871
Life: 3443d 190200 4.4 8281 3.5 4818

• Nominated All-American Aged Cow 1986

D-R-A Ideal Precious Leader EX-90 2E
Life: 2456d 133250 4.0 5308

D-R-A Princess Lad Leader EX-90 3E
9-05 2x 305d 19160 4.2 809

FUTURE READY *Winter Edition*



EBYBROOK SUPER LATISHA EX-90-4E-CAN
3RD DAM OF LOT 31

Lot 31

MURREL & MARTHA SAUDER
6030 BUELHER LINE, RR 1
WALLENSTEIN, ON NOB 2S0
519-698-2704

Golden-Oaks Master-ET

840 3139216917 *TR *TP *TC *TL *TD
PTA -155M +11F -5P 81R 12/21
PTA -2.6PL 2.86SCS -3.3DPR 3.2%DCE
PTA +3.69T +2.90UDC +1.26FLC 80R 12/21
GTPI +2078G GLPI +2739 Conf +13 MS +10

Sauder Holme Unix Lexy

CAN 12804493 VG-85-2YR-CAN
1-11 2x 319d 22683 3.5 802 3.4 765
2-11 2x 170d 13748 3.7 514 3.2 437 RIP

SAUDER HOLME MASTER LIL

CAN 14174846
Born: June 9, 2021 Tag: 491

Dymentholm Mr App Avalanche-TW

CAN 11957107 *RC *CV *TY *TL *TD
PTA -94M -1F -4P 99R 12/21
PTA +3.76T +2.85UDC +2.26FLC GTPI +2036G

Drolie Doorman Macy-ET

CAN 109038878 Excellent-90 EX-MS TR TL TD
3-11 3x 305d 32460 4.1 1346 3.1 994
1-11 2x 365d 27040 5.3 1422 3.4 917

Croteau Lesperron Unix-ET

CAN 107567492 EX-96-CAN ST'17 *TY *TV
PTA +536M +24F +11P 99R 12/21
PTA +2.39T +2.40UDC +.15FLC GTPI +2351G

Sauder Holme Monterey Liztess

CAN 12541046 GP-82-2YR-CAN
1-10 2x 307d 18790 3.5 661 3.4 642

3rd Dam

Ebybrook Super Latisha EX-90-4E-CAN 2*

7-08 2x 325d 31819 2.9 908 3.1 994
Life: 7 Lacs 172715 3.1 5342 3.2 5474

4th Dam

Comestar Model Liztess Talent EX-93-CAN 19*

7-04 3x 365d 38821 3.4 1310 3.2 1248
Life: 4 Lacs 193284 3.8 7377 3.5 6803

5th Dam

Comestar Model Liza Outside VG-87-CAN 27*

4-04 2x 365d 32846 5.2 1713 3.7 1210
Life: 4 Lacs 150510 5.2 7751 3.7 5580

6th Dam

Comestar Model Lady VG-89-CAN 22*

4-00 2x 365d 41164 4.2 1742 3.1 1290
Life: 3 Lacs 112150 4.2 4669 3.3 3646

• Nom All-Canadian Junior 3-Year-Old 1999

7th Dam

Comestar Laurie Inspiration VG-87-CAN 5*

4-04 2x 365d 27436 4.0 1098 3.5 968

8th Dam

Comestar Laurie Sheik VG-88-CAN 23*

6-09 2x 365d 29864 4.5 1329 3.4 1016

• HM All-Canadian Senior 2-Year-Old 1989

• HM All-American Senior 2-Year-Old 1989

9th Dam

Elysa Anthony Lea EX-CAN 15*

6-02 2x 365d 35770 3.9 1398 2.9 1049

Life: 3 Lacs 109850 4.0 4334 3.1 3439



UNIQUE DEMPSEY CHEERS EX-95
FULL SISTER TO DAM OF LOT 32

Reserve All-American Junior 3-Year-Old 2018

Lot 32

CHERRYRIDGE FARMS
 65 FAIR RD
 BRANTFORD, ON N3T 5M1
 519-983-7415

Blondin Destiny-ET

CAN 111633697 *TY*TV A2A2
 PTA +905M +48F +38P 81R 12/21
 PTA +.5PL 2.88SCS -1.6DPR 2.2%DCE
 PTA +2.68T +2.17UDC +1.31FLC 79R 12/21
 GTPI +2609G GLPI +3135 Conf +9

Unique Lucky Charm

CAN 13391999 VG-85-2YR-CAN VG-86-MS
 2-03 2x 104d 7033 4.5 313 3.3 231 RIP

Full sister to Lucky Charm

Unique Dempsey Cheers EX-95

- Reserve All-American Junior 3-Year-Old 2018
- Reserve Int Champion, International Show 2018

CHERRYRIDGE CHERISH

CAN 13060336
 Born: June 30, 2021 HMID: 20

Progenesis Dropkick

CAN 12452135 *TY*TV A2A2
 PTA +512M +37F +29P 93R 12/21
 PTA +2.35T +1.75UDC +.27FLC GTPI +2528G

Kings-Ransom Hot Debbie-ET

840 3142039845 VG-85-CAN
 2-03 2x 365d 36224 5.0 1806 3.5 1279

Lirr Drew Dempsey

61083609 Excellent-93 EXTRA'11 *TV*TL*TY*TD
 PTA -745M -5F -5P 99R 12/21
 PTA +1.64T +1.06UDC +1.04FLC GTPI +1906G

Unique Alexander Charm

CAN 11458478 VG-88-3YR-CAN EX-90-MS
 5-00 2x 365d 30055 4.4 1325 3.6 1074
 4-00 2x 328d 27655 4.7 1285 3.5 979
 3-00 2x 320d 28772 4.4 1252 3.4 988
 Life: 5 Lacs 132970 4.5 6034 3.5 4713

3rd Dam

Stoneden Baxter Canada EX-91-2E-CAN
 5-02 2x 334d 33591 3.7 1230 3.2 1078
 Life: 5 Lacs 118052 3.9 4592 3.3 3904

4th Dam

Stoneden Goldwyn Candace EX-95-3E-CAN 17*
 4-06 2x 365d 43265 4.0 1737 3.0 1307
 Life: 5 Lacs 214424 3.7 7926 3.2 6812
 • HM All-Canadian Senior 2-Year-Old 2009
 • HM All-American Senior 2-Year-Old 2009

5th Dam

Stoneden Leduc Crystal EX-92-2E-CAN 6*
 6-04 2x 306d 26554 3.5 939 3.0 802
 Life: 5 Lacs 118493 3.4 3975 3.1 3688
 • Reserve Grand Champion, Leeds 2005

6th Dam

Stoneden Rudolph Crystal VG-88-CAN 3*
 5-00 2x 347d 30031 3.0 913 2.9 880

7th Dam

Gillette Astre Chria VG-88-CAN 6*
 4-04 2x 365d 34235 2.9 1010 3.0 1014

8th & 9th Dams

Maeford Starbuck Chrissy EX-CAN 17*
 3-03 2x 365d 31702 4.0 1283 3.7 1175

• Grand Champion, Eastern Championship 1990

9th Dam

Montmaple Christina EX-CAN 6*
 7-08 3x 363d 28031 3.4 941 3.2 886

Life: 7 Lacs 152389 3.5 5311

• Reserve Grand Champion, Central Can EX 1987

FUTURE READY *Winter Edition*



VECTOR ZIPPER ZOE-P-RED
DAM OF LOTS 33 & 34

Zoe P has several sons going to stud in 2022 - her impact is just beginning!



VOGUE BOW HOT MESS-P-RED VG-85-CAN
2ND DAM OF LOTS 33 & 34

Lot 33

VOGUE A2P2 ZEPHYR-PP

CAN 14131695 *PP A2A2
Born: July 7, 2021 HMID: 5254
GLPI +3575 Conf +11 12/21
GTPI +2705 +933M +88F +36P +2.18T 12/21
• #2 GLPI PP heifer in World 11/21

Vogue A2P2-PP

CAN 13446574 VG-86-CAN *PP A2A2
PTA +457M +90F +33P 82R 12/21
PTA +0.6PL 2.82SCS -1.4DPR 2.6%DCE
PTA +2.71T +2.20UDC +.84FLC 81R 12/21
GTPI +2718 GLPI +3460 FC +10

Vector Zipper Zoe-P-Red

CAN 13554735 *PC *VRR A2A2
GLPI +3314 Conf +10 12/21
GTPI +2498 +802M +48F +23P +2.18T 12/21
• Due in January, 2022

Lot 34

VOGUE A2P2 ZIGZAG-PP

CAN 14131694 *PP A2A2
Born: July 1, 2021 HMID: 5253
GLPI +3299 Conf +10 12/21
GTPI +2544 +810M +65F +31P +2.11T 12/21
• #16 GLPI PP heifer in Canada 11/21

Cherry-Lily Zip Luster-P-ET

840 3138843085 *PC *TY *TV A2A2
PTA +1285M +72F +40P 98R 12/21
PTA +2.61T +2.22UDC +1.38FLC GTPI +2811G

Silverridge Duke Elsa-P

CAN 108686673 VG-87-CAN 1* *PC
3-11 2x 365d 42450 4.0 1715 3.4 1424
2-02 2x 365d 32555 4.1 1329 3.5 1140

Vector Zipper-P

CAN 12900896 *PO A2A2
GLPI +3218
Conf +8 MS +8 12/21

Vogue Bow Hot Mess-P-Red

CAN 12187125 VG-85-4YR-CAN *VRR A2A2
3-03 2x 365d 40604 3.5 1424 3.0 1224
2-01 2x 313d 25428 3.6 906 3.3 883

VECTOR GENETICS & O'CONNOR LAND & CATTLE
PO BOX 587
ROCKWOOD, ON N0B 2K0
905-866-7800

3rd Dam

OConnors Red Hot Chilli Pepper-Red EX-90-CAN 1*
4-09 2x 365d 32937 4.8 1585 3.5 1157
Life: 4 Lacs 119152 5.1 6122 3.7 4407

4th Dam

OConnors Epic Gold Streak-Red VG-85-CAN 2*
2-08 2x 296d 19744 4.2 827 3.4 664

5th Dam

Morsan Manoman Fools Gold-Red EX-91-CAN 4*
4-03 2x 365d 39024 4.4 1724 3.3 1301

6th Dam

Stoneden Fools Gold-Red VG-88-CAN 9*
4-03 2x 365d 50748 3.8 1942 2.9 1462
Life: 3 Lacs 147155 3.8 5580 3.0 4416

7th Dam

Marktwain Lee Diana-Red VG-85-CAN 2*
3-06 2x 365d 19385 3.8 730 3.0 589

8th Dam

Marktwain Charles Dixie-Red EX-90-CAN
4-03 2x 365d 24140 4.0 977 3.1 741
Life: 8 Lacs 157069 4.1 6385 3.1 4934

Next two dams VG-CAN

FUTURE READY *Winter Edition*



VOGUE MIRAND LOTUS-P
DAM OF LOT 35



SNOWBIZ MCCUTCHEN LOTTIE VG-87-CAN
3RD DAM OF LOT 35

Lot 35

VECTOR GENETICS & O'CONNOR LAND & CATTLE
PO BOX 587
ROCKWOOD, ON N0B 2K0
905-866-7800

Vogue Illustrator-P

CAN 40001172 *PC *TY *TV A2A2
PTA +1114M +62F +25P 82R 12/21
PTA +0.1PL 2.95SCS -2.2DPR 2.4%DCE
PTA +2.98T +2.20UDC +.70FLC 80R 12/21
GTPI +2525 GLPI +3168 Conf +12

Vogue Mirand Lotus-P

CAN 13507014
GLPI +2999 Conf +10 12/21
1-10 2x 140d 10287 4.1 425 3.1 317 RIP

VOGUE ILLUSTRATOR LOLITA

CAN 13958619 *RC A2A2
Born: June 30, 2021 HMID: 519
GLPI +3027 Conf +10 12/21
GTPI +2510 +802M +80F +27P +3.21T 12/21

Cherry-Lily Zip Luster-P-ET

840 3138843085 *PC *TY *TV A2A2
PTA +1285M +72F +40P 98R 12/21
PTA +2.61T +2.22UDC +1.38FLC GTPI +2811G

Vogue Loyola Mudslide-P

CAN 12746407 VG-88-CAN *PC *RC A2A2
3-03 2x 365d 31712 3.9 1462 3.3 1224
2-01 2x 328d 24403 4.0 977 3.4 825

Coomboona Zipit Mirand-PP

AUS 1993596 *RC *PP *TY *TV A2/A2
PTA +746M +26F +11P 90R 12/21
PTA +2.77T +2.30UDC +.56FLC GTPI +2322G

Vogue Contender Lottie-Da

CAN 12746456 VG-86-2YR-CAN
GLPI +3367 Conf +7 12/21
2-06 2x 365d 33170 4.6 1534 3.5 1146

3rd Dam

Snowbiz McCutchen Lottie VG-87-2YR-CAN 8*
2-02 2x 365d 28395 3.8 1078 3.2 915

4th Dam

Freurehaven FGS Lucy VG-86-2YR-CAN 12*
4-10 2x 362d 43660 3.4 1495 3.1 1351
Life: 4 Lacs 167779 3.7 6208 3.1 5227

5th thru 12th Dams

Freurehaven Sbottle Lautella VG-89-CAN 11*
3-00 2x 365d 45221 3.9 1744 3.2 1435

• Reserve Grand, Niagara 2013

Freurehaven Lautella Bolton EX-92-CAN 6*
4-01 2x 365d 41665 3.9 1645 3.2 1362
Life: 3 Lacs 125693 4.2 5276 3.4 4321

Comestar Lautella Goldwyn VG-87-CAN 9*
4-11 2x 365d 46191 4.3 1973 3.3 1534

Comestar Lautelma Igniter VG-89-CAN 21*
4-02 2x 365d 49804 4.7 2343 3.5 1728

Comestar Lautelle Emerson VG-85-CAN 2*
2-02 2x 365d 30298 4.0 1197 3.6 1093

Comestar Lausaun Black VG-87-CAN 23*
5-04 2x 365d 37039 4.3 1567 3.6 1318

Comestar Laurie Sheik VG-88-CAN 23*
6-09 2x 365d 29864 4.5 1329 3.4 1016

• HM All-Canadian Senior 2-Year-Old 1989

• HM All-American Senior 2-Year-Old 1989

Elysa Anthony Lea EX-CAN 15*
6-02 2x 365d 35770 3.9 1398 2.9 1049
Life: 3 Lacs 109850 4.0 4334 3.1 3439

FUTURE READY *Winter Edition*



VOGUE MIRAND LOTUS-P
DAM OF LOT 36



SNOWBIZ MCCUTCHEN LOTTIE VG-87-CAN
3RD DAM OF LOT 36

Lot 36

VECTOR GENETICS & O'CONNOR LAND & CATTLE
PO BOX 587
ROCKWOOD, ON NOB 2K0
905-866-7800

Vogue A2P2-PP

CAN 13446574 VG-86-CAN *PP A2A2
PTA +457M +90F +33P 82R 12/21
PTA +0.6PL 2.82SCS -1.4DPR 2.6%DCE
PTA +2.71T +2.20UDC +.84FLC 81R 12/21
GTPI +2718 GLPI +3460 FC +10

Vogue Mirand Lotus-P

CAN 13507014
GLPI +2999 Conf +10 12/21
1-10 2x 140d 10287 4.1 425 3.1 317 RIP

VOGUE LOTUS LILA-PP

CAN 13958620 *PP *RC A2A2
Born: July 9, 2021 HMID: 520
GLPI +3123 Conf +12 12/21
GTPI +2525 +832M +77F +24P +3.43T 12/21
• #2 GTPI PP female in breed over +3.00 PTAT
11/21

Cherry-Lily Zip Luster-P-ET

840 3138843085 *PC *TY *TV A2A2
PTA +1285M +72F +40P 98R 12/21
PTA +2.61T +2.22UDC +1.38FLC GTPI +2811G

Silverridge Duke Elsa-P

CAN 108686673 VG-87-CAN 1* *PC
3-11 2x 365d 42450 4.0 1715 3.4 1424
2-02 2x 365d 32555 4.1 1329 3.5 1140

Coomboona Zipit Mirand-PP

AUS 1993596 *RC *PP *TY *TV A2/A2
PTA +746M +26F +11P 90R 12/21
PTA +2.77T +2.30UDC +.56FLC GTPI +2322G

Vogue Contender Lottie-Da

CAN 12746456 VG-86-2YR-CAN
GLPI +3367 Conf +7 12/21
2-06 2x 365d 33170 4.6 1534 3.5 1146

3rd Dam

Snowbiz McCutchen Lottie VG-87-2YR-CAN 8*
2-02 2x 365d 28395 3.8 1078 3.2 915

4th Dam

Freurehaven FGS Lucy VG-86-2YR-CAN 12*
4-10 2x 362d 43660 3.4 1495 3.1 1351
Life: 4 Lacs 167779 3.7 6208 3.1 5227

5th thru 12th Dams

Freurehaven Shottle Lautella VG-89-CAN 11*
3-00 2x 365d 45221 3.9 1744 3.2 1435

• Reserve Grand, Niagara 2013

Freurehaven Lautella Bolton EX-92-CAN 6*
4-01 2x 365d 41665 3.9 1645 3.2 1362

Life: 3 Lacs 125693 4.2 5276 3.4 4321

Comestar Lautella Goldwyn VG-87-CAN 9*
4-11 2x 365d 46191 4.3 1973 3.3 1534

Comestar Lautelma Igniter VG-89-CAN 21*
4-02 2x 365d 49804 4.7 2343 3.5 1728

Comestar Lautelle Emerson VG-85-CAN 2*
2-02 2x 365d 30298 4.0 1197 3.6 1093

Comestar Lausaun Black VG-87-CAN 23*
5-04 2x 365d 37039 4.3 1567 3.6 1318

Comestar Laurie Sheik VG-88-CAN 23*
6-09 2x 365d 29864 4.5 1329 3.4 1016

• HM All-Canadian Senior 2-Year-Old 1989

• HM All-American Senior 2-Year-Old 1989

Elysa Anthony Lea EX-CAN 15*

6-02 2x 365d 35770 3.9 1398 2.9 1049
Life: 3 Lacs 109850 4.0 4334 3.1 3439



PARKHURST POWERBALL SALINA-P EX-90-CAN
DAM OF LOT 37

Lot 37

VECTOR GENETICS & O'CONNOR LAND & CATTLE
PO BOX 587
ROCKWOOD, ON N0B 2K0
905-866-7800

Coomboona Zipit Mirand-PP

AUS 1993596 *RC *PP *TY *TV A2/A2
PTA +746M +26F +11P 90R 12/21
PTA -.5PL -.6DPR 3.03SCS 2.4%DCE
PTA +2.77T +2.30UDC +.56FLC 83R 12/21
GTPI +2322G GLPI +2764 FC +10 MS +8

Parkhurst Powerball Salina-P

CAN 109343282 EX-90-5YR-CAN 2* A2A2
GLPI +3170 Conf +5 12/21
3-07 2x 365d 36790 4.2 1550 3.8 1413
5-00 2x 337d 35805 4.9 1770 3.7 1323
2-00 2x 365d 27919 4.2 1177 3.7 1032
Life: 4 Lacs 128169 4.7 6016 3.8 4914

VOGUE MIRAND SAY WHAT-PP

CAN 40022487 *PP A2A2
Born: June 14, 2021 HMID: 2487
GLPI +2883 Conf +5 12/21
GTPI +2368 +331M +44F +17P +2.29T 12/21

OCD Eraser Zipit-P-ET

840 3125170883 *PC A2/A2
PTA +1112M +25F +34P 98R 12/21
PTA +1.55T +1.43UDC +.25FLC GTPI +2452G

Calbrett Kingboy Miranda-P

CAN 11715031 EX-93-CAN 3*
5-05 2x 365d 32674 4.5 1477 3.0 979
2-06 2x 365d 30018 3.9 1164 3.4 1014

View-Home Powerball-P

840 3011789392 *PC A2A2
PTA +1166M +32F +55P 99R 12/21
PTA +.50T +.60UDC -1.18FLC GTPI +2412

Josey-LLC Uno Sangaria-ET

71661942 VG-85-2YR-CAN 8*
2-02 2x 365d 30280 5.3 1598 3.4 1021

3rd Dam

Des-Y-Gen Planet Silk-ET EX-90 10*
2-02 2x 365d 29989 4.5 1351 3.2 959

4th Dam

Gen-I-Beq Bolton Silence-ETS VG-85-CAN 2*
2-04 2x 365d 30002 4.6 1391 3.6 1069

5th Dam

Gen-I-Beq Goldwyn Secret VG-87-CAN 20*
5-05 2x 365d 30573 4.5 1389 3.4 1038

6th Dam

Gen-I-Beq Durham Sherry VG-87-CAN 8*
5-02 2x 365d 40036 3.9 1574 3.2 1268

7th Dam

Glen Drummond Splendor VG-86-2YR-CAN 39*
4-10 2x 314d 26510 4.2 1124 3.2 840

8th Dam

Glen Drummond Aero Flower VG-88-CAN 18*
2-03 2x 326d 25622 4.0 1032 3.4 882

9th Dam

Glen Drummond Shower-ET EX-CAN 14*
4-10 2x 365d 28583 4.8 1380 3.6 1016

10th thru 13th Dams

Glen Drummond S C Jo Beth EX-2E-CAN 7*
Life: 6 Lacs 141637 4.2 5994 3.2 3593

Glen Drummond Matt Beth VG-85 4*
11-9 2x 365d 25038 3.7 935

Glen Drummond Marquis Beth VG-CAN
Ferglynn Rag Apple Bertha VG-CAN 3*

FUTURE READY *Winter Edition*



SILVERRIDGE DUKE ELSA-P VG-87-CAN
2ND DAM OF LOT 38

*Dam of Vogue Illustrator-P *RC & Vogue Picasso *PP *RC*



VOGUE LUSTER ESTEEM-P
DAM OF LOT 38

Lot 38

VECTOR GENETICS & O'CONNOR LAND & CATTLE
 PO BOX 587
 ROCKWOOD, ON N0B 2K0
 905-866-7800

Vogue Nipit-PP

CAN 40001169 *PP *RC A2A2
 PTA +481M +71F +48P 81R 12/21
 PTA +1.3PL 3.09SCS -.8DPR 2.8%DCE
 PTA +1.80T +1.59UDC +.58FLC 79R 12/21
 GTPI +2652G GLPI +3183 Conf +4

Vogue Luster Esteem-P

CAN 13278192 GP-82-2YR-CAN
 GLPI +3284 Conf +9 12/21
 GTPI +2715 +1655M +77F +50P +2.47T 12/21
 2-02 2x 179d 11080 4.1 459 3.4 375 RIP

VOGUE NIPIT ESTELL-PP

CAN 13958604 *PP A2A2
 Born: April 9, 2021 HMID: 504
 GLPI +3240 Conf +5 12/21
 GTPI +2694 +1079M +93F +50P +1.51T 12/21
 • #9 *GTPI PP female over +1.50 PIAT in breed*
 8/21

Wilder Hotspot P

DEU 539675034 *PC
 PTA +308M +47F +44P 92R 12/21
 PTA +1.35T +1.38UDC +.24FLC GTPI +2587G

Vogue Splendid Samara-PP

CAN 12900913 VG-88-CAN *RC A2A2
 3-01 2x 358d 34374 4.6 1583 3.7 1276
 2-00 2x 321d 25135 4.4 1093 3.8 950

Cherry-Lily Zip Luster-P-ET

840 3138843085 *PC *TY *TV A2A2
 PTA +1285M +72F +40P 98R 12/21
 PTA +2.61T +2.22UDC +1.38FLC GTPI +2811G

Silverridge Duke Elsa-P

CAN 108686673 VG-87-CAN 1* *PC
 GLPI +3271 Conf +7 12/21
 3-11 2x 365d 42450 4.0 1715 3.4 1424
 2-02 2x 365d 32555 4.1 1329 3.5 1140

3rd Dam

Silverridge V Pball Erna P VG-86-2YR-CAN 2*
 2-00 2x 365d 36528 3.4 1237 3.4 1246
 Life: 4 Lacs 124075 3.2 3968 3.4 4244

4th Dam

Silverridge V McCut Excited EX-91-CAN 1*
 3-07 2x 365d 39654 3.4 1358 3.3 1307
 Life: 3 Lacs 117884 3.4 4015 3.3 3922

5th Dam

Velthuis SG Snow Event VG-87-CAN 11*
 5-00 2x 365d 45331 3.5 1598 3.3 1475
 Life: 2 Lacs 119223 3.6 4235 3.3 3959

6th Dam

Calbrett Planet Eve VG-87-CAN 17*
 6-06 2x 365d 38435 3.7 1435 3.2 1215
 Life: 6 Lacs 251845 4.0 10152 3.4 8644

7th Dam

Wabash-Way Evett-ET VG-86 DOM 27*
 2-02 2x 365d 34187 4.9 1660 3.3 1111

8th Dam

Crockett-Acres Elita-ET VG-87 GMD DOM 18*
 2-02 2x 365d 39010 3.8 1479 3.5 1382

9th Dam

Crockett-Acres Mtot Elly-ET EX-90 GMD DOM 11*
 2-04 2x 321d 28550 4.5 1276 3.3 948

10th Dam

Wauregan Rudolph Elly Mae EX-90
 4-06 2x 365d 40210 3.6 1455 3.4 1376

Next seven dams VG & EX!



**PEAK HAWAII HTLN 80660-ET GP-84-CAN
DAM OF LOT 39**

Full Sister to Peak Tropic

Lot 39

VECTOR GENETICS & O'CONNOR LAND & CATTLE
PO BOX 587
ROCKWOOD, ON N0B 2K0
905-866-7800

Vogue Limelight-P-ET

CAN 40000062 PC *TC
PTA +863M +74F +49P 84R 12/21
PTA +2.0PL 2.85SCS -1.1DPR 2.2%DCE
PTA +1.47T +1.64UDC -.10FLC 79R 12/21
GTPI +2693G GLPI +3350 Conf +5

Peak Hawaii Htln 80660-ET

840 3145229823 GP-84-2YR-CAN
GTPI +2769 +947M +89F +57P +2.55T 12/21
GLPI +3348 Conf +6 12/21
2-00 2x 365d 26649 4.9 1316 3.9 1027

VOGUE HAWAII LIME OH-P

CAN 13958616 *PC A1A2
Born: June 11, 2021 HMID: 516
GLPI +3416 Conf +9 12/21
GTPI +2677 +1012M +72F +52P +2.36T 12/21
• #16 GLPI P or PP heifer in Canada over +9 Conf.

Peak AltaSpice-P-ET

840 3131131455 PC *TC
PTA +1097M +45F +44P 96R 12/21
PTA +1.43T +1.74UDC -.26FLC GTPI +2532G

OConnors Supershot Lasting

CAN 12111888 EX-91-CAN
3-03 2x 365d 39819 4.6 1812 3.7 1464
Life: 3 Lacs 114774 4.4 5038 3.7 4213

Peak Hotline-ET

840 129128855
PTA +1017M +86F +50P 99R 12/21
PTA +2.79T +2.47UDC +1.61FLC GTPI +2707G

BGP Hawaii-ET

840 3135087033 Very Good-85
GTPI +2657 +602M +67F +49P +1.95T 12/21
2-04 2x 215d 20680 4.3 788 3.9 692

3rd Dam

Lookout Pesce Epic Hue-ET VG-86 VG-MS
GTPI +2329 +596M +58F +46P +2.34T 12/18
2-00 2x 323d 24330 4.3 1037 3.7 903

4th Dam

Cookiecutter MOM Hue-ET VG-88-2YR-CAN
2-04 2x 365d 28887 4.2 1210 3.7 1065

5th Dam

Cookiecutter Sht Hollerwood EX-92 2E DOM
4-00 3x 365d 30340 5.1 1562 3.4 1045

6th Dam

Cookiecutter Gold Holler-ET VG-88 DOM
2-03 2x 365d 40730 3.5 1410 3.1 1249

7th thru 12th Dams

Ms Kings-Ransom Champ Haley-ET EX-90 GMD
3-11 3x 365d 43690 3.7 1625 3.1 1357

Regancrest-JDV Hanna-ET EX-90 EVVVE
4-07 2x 365d 45110 4.3 1922 3.2 1449

Long-Haven Rudolph Dee-ET EX-90 2E GMD DOM
2-11 2x 365d 32720 4.8 1565 3.8 1252

Life: 2193d 166900 4.3 7099 3.5 5884

Regancrest Elton Disrael-ET VG-88 EX-MS DOM
2-04 2x 365d 33617 4.5 1499 3.5 1169

Snow-N Denises Dellia EX-95 2E GMD DOM
6-00 2x 365d 35230 4.0 1425 3.0 1049

Life: 2558d 180240 3.9 7108 3.2 5723

Snow-N Dorys Denise EX-90 2E GMD DOM
Life: 1604d 114010 3.6 4153 3.2 3649

FUTURE READY *Winter Edition*



VOGUE LOYOLA MUDSLIDE-P VG-88-CAN
DAM OF LOT 40

*Dam of Vogue Illustrator-P *RC & Vogue Picasso *PP *RC*



CALBRETT KINGBOY MIRANDA-P EX-93-CAN
2ND DAM OF LOT 40

Global Cow of the Year 2021

Lot 40

VECTOR GENETICS & O'CONNOR LAND & CATTLE
PO BOX 587
ROCKWOOD, ON N0B 2K0
905-866-7800

VOGUE ALLDAY MUDDY

CAN 40022500 *RC A2A2
Born: August 8, 2021 HMID: 2500
GLPI +3212 Conf +7 12/21
GTPI +2595 +519M +61F +36P +1.46T 12/21

Drumdale AllDay-P

CAN 111484905 *PO A2A2
PTA +455M +62F +36P 82R 12/21
PTA +1.9PL 2.69SCS +1.8DPR 2.1%DCE
PTA +2.05T +1.60UDC +.83FLC 80R 12/21
GTPI +2742G GLPI +3501 Conf +9

Vogue Loyola Mudslide-P

CAN 12746407 VG-88-CAN *PC *RC A2A2
3-03 2x 365d 31712 3.9 1462 3.3 1224
2-01 2x 328d 24403 4.0 977 3.4 825

Cherry-Lily Zip Luster-P-ET

840 3138843085 *PC *TY *TV A2A2
PTA +1285M +72F +40P 98R 12/21
PTA +2.61T +2.22UDC +1.38FLC GTPI +2811G

Boldi V Powerball All Up

CAN 12464053 EX-90-CAN
3-03 2x 365d 31041 4.0 1252 3.8 1164
4-10 2x 311d 29416 4.4 1303 3.6 1060

Zimmerview Wonka Loyola-P

73926711 *PC *RC A2A2
PTA +1405M +27F +33P 99R 12/21
PTA +1.41T +1.96UDC -.13FLC GTPI +2187G

Calbrett Kingboy Miranda-P

CAN 11715031 EX-93-5YR-CAN 4*
5-05 2x 365d 32674 4.5 1477 3.0 979
2-06 2x 365d 30018 3.9 1164 3.4 1014
3-11 2x 345d 30349 3.9 1171 3.3 999

3rd Dam

Snowbiz Ladd P Marshmellow VG-87-CAN 10*
4-00 2x 351d 32128 5.3 1689 3.7 1195

4th Dam

Venture Snow Muse P VG-86-2YR-CAN 5*
4-06 3x 355d 35168 4.5 1581 3.4 1182

5th Dam

West Port Arron Doon Mit P-Red VG-85-CAN 3*
2-11 2x 365d 34220 4.9 1689 3.3 1120

5th Dam

West Port Arron Doon May P-Red VG-88-CAN 2*
5-09 2x 365d 39766 4.0 1591 3.3 1305
Life: 3 Lacs 118533 4.0 4050 3.4 4050

6th Dam

Hickorymea Judge Maren P VG-85-CAN *RC
5-11 2x 365d 30181 3.9 1168 3.1 922

7th Dam

Hickorymea Leader Mel P-Red VG-86
5-01 2x 356d 25461 3.6 908 2.8 725

FUTURE READY *Winter Edition*



SILVERRIDGE DUKE ELSA-P VG-87-CAN
2ND DAM OF LOT 41

*Nominated Global Cow of the Year 2021 & Dam of Vogue A2P2 *PP*



VOGUE HOTSPOT EMMA-P
DAM OF LOT 41

Lot 41

VECTOR GENETICS & O'CONNOR LAND & CATTLE
PO BOX 587
ROCKWOOD, ON N0B 2K0
905-866-7800

Cherry-Lily Zip Luster-P-ET

840 3138843085 *PC *TY *TV A2A2
PTA +1285M +72F +40P 98R 12/21
PTA +2.1 2.75SCS +.4DPR 2.9%DCE
PTA +2.61T +2.22UDC +1.38FLC 95R 12/21
GTPI +2811G GLPI +3474 Conf +10

Vogue Hotspot Emma-P

CAN 13446579
GLPI +3416 Conf +6 12/21
GTPI +2686 +937M +67F +47P +1.28T 12/21
• *Fresh in November and looks good!*

VOGUE LUSTER LUCKY 7

CAN 13958621 A1A2
Born: July 24, 2021 HMID: 521
GLPI +3575 Conf +8 12/21
GTPI +2804 +681M +63F +48P +1.54T 12/21
• #2 *GLPI Luster P* *dtr in World 11/21*

OCD Eraser Zipit-P-ET

840 3125170883 *PC A2/A2
PTA +1112M +25F +34P 98R 12/21
PTA +1.55T +1.43UDC +.25FLC GTPI +2452G

Cherry-Lor Kboy Loma-ET

840 3130708852 Very Good-85
4-03 2x 288d 32339 4.2 1356 3.3 1078
5-03 2x 361d 31041 4.6 1424 3.4 1067

Wilder Hotspot P

DEU 539675034 *PC
PTA +308M +47F +44P 92R 12/21
PTA +1.35T +1.38UDC +.24FLC GTPI +2587G

Silverridge Duke Elsa-P

CAN 108686673 VG-87-CAN 1* *PC
GLPI +3271 FC +7 12/21
3-11 2x 365d 42450 4.0 1715 3.4 1424
2-02 2x 365d 32555 4.1 1329 3.5 1140

3rd Dam

Silverridge V Pball Erna P VG-86-2YR-CAN 2*
2-00 2x 365d 36528 3.4 1237 3.4 1246
Life: 4 Lacs 124075 3.2 3968 3.4 4244

4th Dam

Silverridge V McCut Excited EX-91-CAN 1*
3-07 2x 365d 39654 3.4 1358 3.3 1307
Life: 3 Lacs 117884 3.4 4015 3.3 3922

5th Dam

Velthuis SG Snow Event VG-87-CAN 11*
5-00 2x 365d 45331 3.5 1598 3.3 1475
Life: 2 Lacs 119223 3.6 4235 3.3 3959

6th Dam

Calbrett Planet Eve VG-87-CAN 17*
6-06 2x 365d 38435 3.7 1435 3.2 1215
Life: 6 Lacs 251845 4.0 10152 3.4 8644

7th Dam

Wabash-Way Eveit-ET VG-86 DOM 27*
2-02 2x 365d 34187 4.9 1660 3.3 1111

8th Dam

Crockett-Acres Elita-ET VG-87 GMD DOM 18*
2-02 2x 365d 39010 3.8 1479 3.5 1382

9th Dam

Crockett-Acres Mtot Elly-ET EX-90 GMD DOM 11*
2-04 2x 321d 28550 4.5 1276 3.3 948

10th Dam

Wauregan Rudolph Elly Mae EX-90
4-06 2x 365d 40210 3.6 1455 3.4 1376
Next seven dams VG & EX!

FUTURE READY *Winter Edition*



SILVERRIDGE DUKE ELSA-P VG-87-CAN
2ND DAM OF LOTS 42 & 43

*Nominated Global Cow of the Year 2021 & Dam of Vogue A2P2 *PP*



VOGUE HOTSPOT EMMA-P
DAM OF LOTS 42 & 43

Lot 42

VOGUE PICASSO EMBRACE-PP

CAN 14221793 *PP A1A2
Born: September 22, 2021 HMID: 5278
GLPI +3020 Conf +8 12/21
GTPI +2423 +943M +47F +39P +2.23T 12/21

VECTOR GENETICS & O'CONNOR LAND & CATTLE
905-866-7800

Vogue Picasso-PP

CAN 40001178 *PP *RC *TY *TV A2A2
PTA +944M +17F +21P 81R 12/21
PTA -1.3PL 3.11SCS -3.6DPR 2.3%DCE
PTA +2.89T +2.09UDC +.71FLC 79R 12/21
GTPI +2198G GLPI +2804 Conf +12

Vogue Hotspot Emma-P

CAN 13446579
GLPI +3416 Conf +6 12/21
GTPI +2686 +937M +67F +47P +1.28T 12/21
• Fresh in November and looks good!

Lot 43

VOGUE PIC GRAND FINALE-P

CAN 40022510 A1A2
Born: October 12, 2021
GLPI +3283 Conf +10 12/21
GTPI +2516 +1276M +43F +44P +1.83T 12/21

Coomboona Zipit Mirand-PP

AUS 1993596 *RC *PP *TY *TV A2/A2
PTA +746M +26F +11P 90R 12/21
PTA +2.77T +2.30UDC +.56FLC GTPI +2322G

Vogue Loyola Mudslide-P

CAN 12746407 VG-88-CAN *PC *RC A2A2
3-03 2x 365d 31712 3.9 1462 3.3 1224
2-01 2x 328d 24403 4.0 977 3.4 825

Wilder Hotspot P

DEU 539675034 *PC
PTA +308M +47F +44P 92R 12/21
PTA +1.35T +1.38UDC +.24FLC GTPI +2587G

Silverridge Duke Elsa-P

CAN 108686673 VG-87-CAN 1* *PC
GLPI +3271 FC +7 12/21
3-11 2x 365d 42450 4.0 1715 3.4 1424
2-02 2x 365d 32555 4.1 1329 3.5 1140

3rd Dam

Silverridge V Pball Erna P VG-86-2YR-CAN 2*

2-00 2x 365d 36528 3.4 1237 3.4 1246
Life: 4 Lacs 124075 3.2 3968 3.4 4244

4th Dam

Silverridge V McCut Excited EX-91-CAN 1*

3-07 2x 365d 39654 3.4 1358 3.3 1307
Life: 3 Lacs 117884 3.4 4015 3.3 3922

5th Dam

Velthuis SG Snow Event VG-87-CAN 11*

5-00 2x 365d 45331 3.5 1598 3.3 1475
Life: 2 Lacs 119223 3.6 4235 3.3 3959

6th Dam

Calbrett Planet Eve VG-87-CAN 17*

6-06 2x 365d 38435 3.7 1435 3.2 1215
Life: 6 Lacs 251845 4.0 10152 3.4 8644

7th Dam

Wabash-Way Eve-ET VG-86 DOM 27*

2-02 2x 365d 34187 4.9 1660 3.3 1111

8th Dam

Crockett-Acres Elita-ET VG-87 GMD DOM 18*

2-02 2x 365d 39010 3.8 1479 3.5 1382

9th Dam

Crockett-Acres Mtot Elly-ET EX-90 GMD DOM 11*

2-04 2x 321d 28550 4.5 1276 3.3 948

10th Dam

Wauregan Rudolph Elly Mae EX-90

4-06 2x 365d 40210 3.6 1455 3.4 1376

Next seven dams VG & EX!

FUTURE READY *Winter Edition*



OCONNORS LUSTER LOVE-P VG-87-CAN
DAM OF LOTS 44, 45, 46



Lot 44

VOGUE REDEYE LOVE LIES

CAN 14221786 *RC A2A2
Born: September 1, 2021 HMID: 5271
GLPI +3032 Conf +8 12/21
GTPI +2582 +1365M +46F +33P +2.66T 12/21

VECTOR GENETICS & O'CONNOR LAND & CATTLE
905-866-7800

Vogue Redeye P-Red

CAN 40001147 *PC *TY *TV A2A2
PTA +747M +49F +29P 82R 12/21
PTA +3.4PL 2.82SCS +0.3DPR 2.2%DCE
PTA +2.47T +2.14UDC +1.42FLC 80R 12/21
GTPI +2672G GLPI +3125 Conf +8

OConnors Luster Love-P

CAN 40012241 VG-87-2YR-CAN
2-02 2x 183d 17017 3.8 650 3.0 514 RIP
• HM Canadian Champion Junior Yearling 2020
• Reserve All-Canadian 4-H Calf 2019

Full sister to Endless Love

Vogue LMF Love Actually VG-89-3YR-CAN

3-03 2x 326d 31186 4.2 1303 3.4 1056
• Nom Canadian Champion Jr 3-Year-Old 2020

Lot 45

VOGUE REDEYE LOVE AFFAIR-P

CAN 14221783 *PC *RC A2A2
Born: September 2, 2021 HMID: 5268
GLPI +3054 Conf +10 12/21
GTPI +2487 +851M +38F +18P +2.51T 12/21

Progenesis Webster-ET

CAN 12648638 *PO *RC A2A2
PTA +1153M +51F +52P 95R 12/21
PTA +1.76T +1.83UDC +.88FLC GTPI +2709G

Calbrett Kingboy Miranda-P

CAN 11715031 EX-93-CAN 3*
5-05 2x 365d 32674 4.5 1477 3.0 979
2-06 2x 365d 30018 3.9 1164 3.4 1014

Cherry-Lily Zip Luster-P-ET

840 3138843085 *PC *TY *TV A2A2
PTA +1285M +72F +40P 98R 12/21
PTA +2.61T +2.22UDC +1.38FLC GTPI +2811G

Vogue LMF Endless Love

CAN 40012023 VG-88-4YR-CAN
2-10 RX 311d 30754 3.7 1140 3.2 977
2-00 RX 300d 26845 4.0 1063 3.4 904
3-11 RX 228d 26837 4.1 1087 3.1 827 RIP

Lot 46

VOGUE REDEYE LOVES LOCKET-PP

CAN 14221788 *PP *RC A2A2
Born: September 3, 2021 HMID: 5273
GLPI +3037 Conf +9 12/21
GTPI +2499 +1051M +34F +29P +2.57T 12/21

3rd Dam

Belfast Doorman Lovestruck VG-88-3YR-CAN 3*

3-05 2x 365d 31219 3.5 1093 3.5 1087
• Res All-Canadian Intermediate Yearling 2015
• All-Canadian Intermediate Calf 2014

3rd Dam

Belfast Goldwyn Lasenza EX-95-3E-CAN 12*

7-06 2x 365d 42657 4.0 1689 3.3 1407
Life: 5 Lacs 211254 4.0 8525 3.5 7355

• All-Canadian Junior 2-Year-Old 2013
• All-American Junior 2-Year-Old 2012

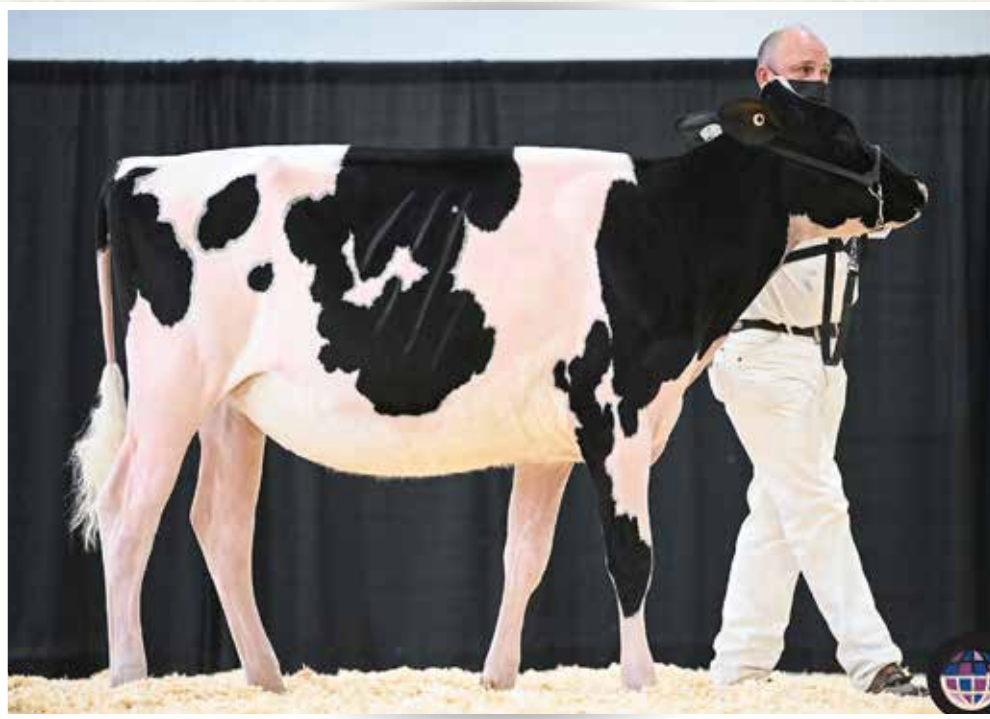
4th Dam

Lylehaven Durham Lekysya-ET EX-92-CAN 5*

3-07 2x 365d 34661 4.2 1444 3.4 1190
Life: 3 Lacs 134855 4.4 5897 3.7 4958

• HM All-Canadian Senior 3-Year-Old 2011
• Reserve All-American Senior 2-Year-Old 2010
• HM All-Canadian Senior 2-Year-Old 2010

Next two dams Excellent



CLARKVALLEY LUSTER JULY
SELLS AS LOT 47

1st Senior Calf, Autumn Opportunity Show 2021

Lot 47

HOWES HOLSTEINS, KEATON PHOENIX & BARCLAY PHOENIX
7086 SPRINGFIELD RD, RR 6
ALYMER, ON N5H 2R5
519-282-5245 BRENT HOWE

Cherry-Lily Zip Luster-P-ET

840 3138843085 *PC *TY *TV A2A2
PTA +1285M +72F +40P 98R 12/21
PTA +2.1 2.75SCS +.4DPR 2.9%DCE
PTA +2.61T +2.22UDC +1.38FLC 95R 12/21
GTPI +2811G GLPI +3474 Conf +10

Berautec McCutchen July

CAN 108403949 EX-92-2E-CAN EX-93-MS
• 2nd Junior 3-Year-Old, Lindsay Ex 2017
• 3rd Junior 3-Year-Old, ON Summer Show 2017
• 5th Junior 3-Year-Old, Autumn Opportunity 2017

CLARKVALLEY LUSTER JULY

CAN 13592304 *POR *CDF *BYC *CVF
Born: September 21, 2020 HMID: 287
GLPI +2791 Conf +8 12/21
GTPI +2242 +789M +26F +9P +2.38T 12/21

Bred: November 26, 2021 to
Vogue A2P2-PP #13446574

OCD Eraser Zipit-P-ET

840 3125170883 *PC A2/A2
PTA +1112M +25F +34P 98R 12/21
PTA +1.55T +1.43UDC +.25FLC GTPI +2452G

Cherry-Lor Kboy Loma-ET

840 3130708852 Very Good-85
4-03 2x 288d 32339 4.2 1356 3.3 1078
5-03 2x 361d 31041 4.6 1424 3.4 1067

De-Su Bkm McCutchen 1174-ET

69990138 Excellent-93 GM 8/15 *TV *TL *TY *TD
PTA +248M +26F +11P 99R 12/21
PTA +2.18T +1.39UDC +.98FLC GTPI +2217G

Berautec Wildthing Jenna

CAN 107765374 VG-86-2YR-CAN VG-87-MS
5-00 2x 365d 34263 3.0 1034 3.2 1120
3-00 2x 365d 28927 3.1 906 3.4 970
1-11 2x 355d 26312 3.4 884 3.3 873
Life: 4 Lacs 106286 3.2 3369 3.3 3534

JULY!

- 10th Senior Calf, National Holstein Show 2021
- 1st Senior Calf & HM Junior Champion, Autumn Opportunity 2021
- Champion 4-H Calf, Autumn Opportunity 2021
- 1st & Champion Calf, Forest Fall Fair 2021

3rd Dam

Berautec Dundee Jackarta VG-85-CAN 1*
5-06 2x 365d 27798 3.3 924 3.2 893
Life: 6 Lacs 146244 3.3 4799 3.2 4733

4th Dam

Berautec Jed Jackarta VG-85-CAN 1*
3-08 2x 365d 29039 2.9 836 2.9 851

5th Dam

Berautec Astre Jacky EX-2E-CAN
5-05 2x 342d 24621 4.1 999 3.1 772

6th Dam

Superiorview Jet Janine VG-88-CAN 2*
12-6 2x 328d 22260 3.6 805 3.1 697
Life: 13 Lacs 262991 3.7 9658 3.2 8466

Lot 48

DAVID DYMENT, JOHN MARTIN & FRED KILLING
468 FALLSVIEW RD
DUNDAS, ON L9H 5E2
905-308-1008 DAVID
226-228-8820 JOHN
519-535-1719 FRED

Mr Chassity Gold Chip-ET

140145553 Excellent-95 ST*14 *TY *TV
PTA -577M -22F -37P 99R 12/21
PTA +.0PL 2.78SCS -1.6DPR 1.5%DCE
PTA +1.54T +1.11UDC +1.09FLC 99R 12/21
GTPI +1760G

Kaymanor Carson Langley

CAN 118088254 EX-90-6YR-CAN
6-03 2x 365d 28455 3.4 959 2.9 833
5-04 2x 296d 23395 3.4 805 2.8 659
2-02 2x 334d 22154 3.1 686 2.9 648
3-02 2x 354d 21980 3.4 741 3.0 661

FUTURE READY *Winter Edition*

KAYMANOR GOLD CHIP LEXUS

CAN 13006256
Born: November 18, 2018 HMID: 367
2-09 2x 93d 7549 3.9 291 3.0 227 RIP

Bred: November 27, 2021 to
Farnear Delta-Lambda-ET 551H03379

Maternal sisters to Carson Langley

Bojudabrook Louisville EX-92-3E-CAN
5-03 2x 305d 21016 3.3 692 3.1 657
Bojudabrook Lexington VG-87-CAN
3-00 2x 365d 32650 4.0 1303 3.1 1012

Braedale Goldwyn

CAN 10705608 GP-CAN GM 12/11 *TV *TL
PTA -704M -7F -12P 99R 12/21
PTA +1.05T +.62UDC +.79FLC GTPI +1860G

Regancrest S Chassity-ET

62496899 Excellent-92 GMD DOM *TY
3-10 2x 365d 42280 4.3 1798 2.5 1070
Life: 1071d 105520 4.2 4383 2.8 2959

Mr Chassity Obs Carson-ET

141007962
PTA +1213M -19F +6P 95R 12/21
PTA +.79T +1.30UDC -.06FLC GTPI +1947G

Bojudabrook Loonie-ET

CAN 9645088 EX-90-2E-CAN
3-11 2x 365d 26890 3.0 814 2.9 772
6-08 2x 347d 26347 3.2 836 3.0 776
5-03 2x 365d 24811 3.2 805 2.9 712

3rd Dam

Bojudabrook Lero VG-88-CAN
4-00 2x 365d 31017 3.2 988 2.9 893
Life: 4 Lacs 114760 3.3 3810 3.0 3388

4th Dam

Bojudabrook Logo VG-86-CAN
4-02 2x 340d 21744 3.5 752 2.9 637

5th Dam

Bojudabrook Lillith VG-88-CAN
4-01 2x 315d 21241 4.0 860 3.4 721
Life: 7 Lacs 139284 3.9 5392 3.5 4810

FUTURE READY *Winter Edition*

Lot 49

FIVE UNITS OF MR ATLEES SHT AFTERSHOCK
Sexed semen

Consignor: Stephens Genetics, ON

Lot 50

FIVE UNITS OF MR ATLEES SHT AFTERSHOCK
Sexed semen

Consignor: Stephens Genetics, ON

Lot 51

SIX UNITS OF WALNUTLAWN SOLOMON

Consignor: Stephens Genetics, ON

Lot 52

SIX UNITS OF WALNUTLAWN SOLOMON

Consignor: Stephens Genetics, ON

Lot 53

THREE UNITS OF LIRR DREW DEMPSEY

Consignor: Stephens Genetics, ON

Lot 54

FIVE UNITS OF REGANCREST DUNDEE

Consignor: Stephens Genetics, ON

Lot 55

FIVE UNITS OF APPLES ABSOLUTE-RED

Consignor: Stephens Genetics, ON

Lot 56

FIVE UNITS OF APPLES ABSOLUTE-RED

Consignor: Stephens Genetics, ON

Lot 57

THREE UNITS OF MR APPLES ARMANI
Sexed semen

Consignor: Stephens Genetics, ON

Lot 58

**SEVEN UNITS OF PATIENCE SHOWLINE
CONTENDER**

Consignor: Stephens Genetics, ON

FUTURE READY *Winter Edition*

Lot 59 **ELEVEN UNITS OF SC GOLDUST PARAMOUNT
IATOLA** Consignor: Stephens Genetics, ON

Lot 60 **FOUR UNITS OF PEAK JAGGER**
Conventional semen Consignor: Dymenthalm, ON

Lot 61 **FIVE UNITS OF AVANT-GARDE UNIX SELECT**
Conventional semen Consignor: Dymenthalm, ON

Lot 62 **THREE UNITS OF MIRABELL SOUND SYSTEM**
Conventional semen Consignor: Dymenthalm, ON

Lot 63 **FIVE UNITS OF BLONDIN DESTINY**
Conventional semen Consignor: Dymenthalm, ON

Lot 64 **FOUR UNITS OF HYDEN LIMITED-P**
Conventional semen Consignor: Dymenthalm, ON

Lot 65 **FOUR UNITS OF BROWDALE MANEUVER PP** Consignor: Corwin Schaap, ON

BUY ONLINE



SYNERGY

733HO00002 KARNVILLA SYNERGY

AG3 USD \$1,500

ABOUT SIRES MARKET CONTACT

SYNERGY

733HO00002 SYNERGY (Conventional)
HOCANM13521884

HANIKO x DOORMAN x MCCUTCHEN
aAa: 231465

Plus production | SCS 2.73 | +3.20 Type | +2.46 UDC | +3.83 Fore Udder

Sired by **Siemers Lambda Haniko**, Synergy combines two powerful, world-respected cow families - the Glen Drummond Splendors and the Dellias through MOM Halo.

Scale and fabulous udders from a modern sire stack and proven cow families top and bottom!

AVANT GARDE

HEATH | DION | DYMENT



Dam
AVANT-GARDE DM SONGBIRD
 VG-87-2YR-CAN
 Doorman x Summer
 2-02 2x 365d 32,222 4.6 1495 3.7 1186 lbs

1st Senior 3-Year-Old EON-WQC Championship Show 2021

2nd Dam
WALNUTLAWN MCCUTCHEN SUMMER
 EX-95 2E 9*
 Nominated Canadian Cow of the Year
 Nominated All-Canadian Mature Cow
 Nominated All-American
 & All-Canadian Senior 3-Year-Old 2016
 To date: 15 of 16 daughters are VG or EX ALL with VG or EX Mammary



BUY ONLINE
 DIRECT FROM THE BULL TO YOUR BARN
 AG3.ca | info@ag3.ca | 905.308.1008

Breeding Consistency
FROM COWS WITH PURPOSE